

SKETCH O.K.

FIRST LINE  
WINCHESTER POCKET KNIVES.  
DEVELOPED FOR MANUFACTURE.  
JANUARY 1<sup>ST</sup> 1920 - APRIL 1<sup>ST</sup> 1922.  
MODEL DRAWINGS, MODELS & TEMPLATES FINISHED

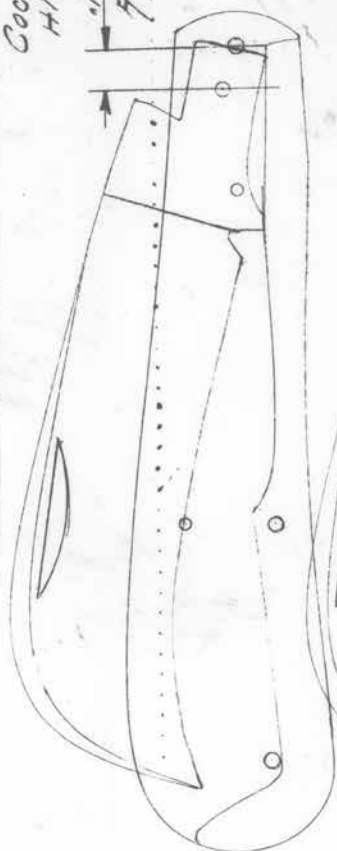
		No. & SIZE OF WIRE
X	#10 PRUNER.	#14 .088
X	#1100 SWELL CENTER HUNTING KNIFE	#13 .075 #14 .083
X	#200 STABBER, REGULAR JACK & BARLOW	#15 .072
X	#240 SLIM JACK & SLEEVEBOARD.	#15 .072
X	#300 LIGHT CATTLE KNIFE.	#15 .072
X	#311 SMALL SENATOR.	#17 .058
X	#321 CATTLE KNIFE.	#14 .083
X	#400 SENATOR.	#16 .065
X	#440 CONGRESS.	#15 .072
X	#470 ORANGE BLOSSOM LOBSTER.	#17 .058
X	#2080 REGULAR STRAIGHT JACK.	#14 .083
X	#2120 BALLOON JACK.	#14 .083
X	#2130 SLIM JACK.	#15 .072
X	#2146 SWAYBACK HUNTING KNIFE.	#14 .083
X	#2170 WHARNCLIFF	#16 .065
X	#2375 SWELL END JACK	#15 .072
X	#2570 SERPENTINE JACK.	#14 .083
X	#2650 SERPENTINE LOBSTER.	#17 .058
X	#2660 LIGHT PREMIUM STOCK.	#15 .072
X	#3080 SLEEVEBOARD.	#15 .072
X	#3280 EQUALEND BALLOON JACK.	#15 .072
X	#3290 SLEEVEBOARD LOBSTER.	#17 .058
X	#3810 SLEEVEBOARD LOBSTER.	#17 .058
X	#4050 <u>HEAVY PREMIUM.</u>	#14 .083
TOTAL 24 PATTERNS.		

*[Faint, illegible handwritten text, possibly bleed-through from the reverse side of the page.]*

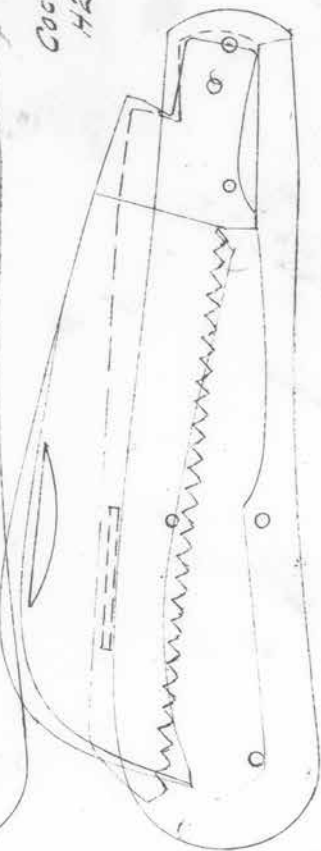
C000804F  
H1610P

192 GAUGE  
FSS, SP. P.

3/9/23

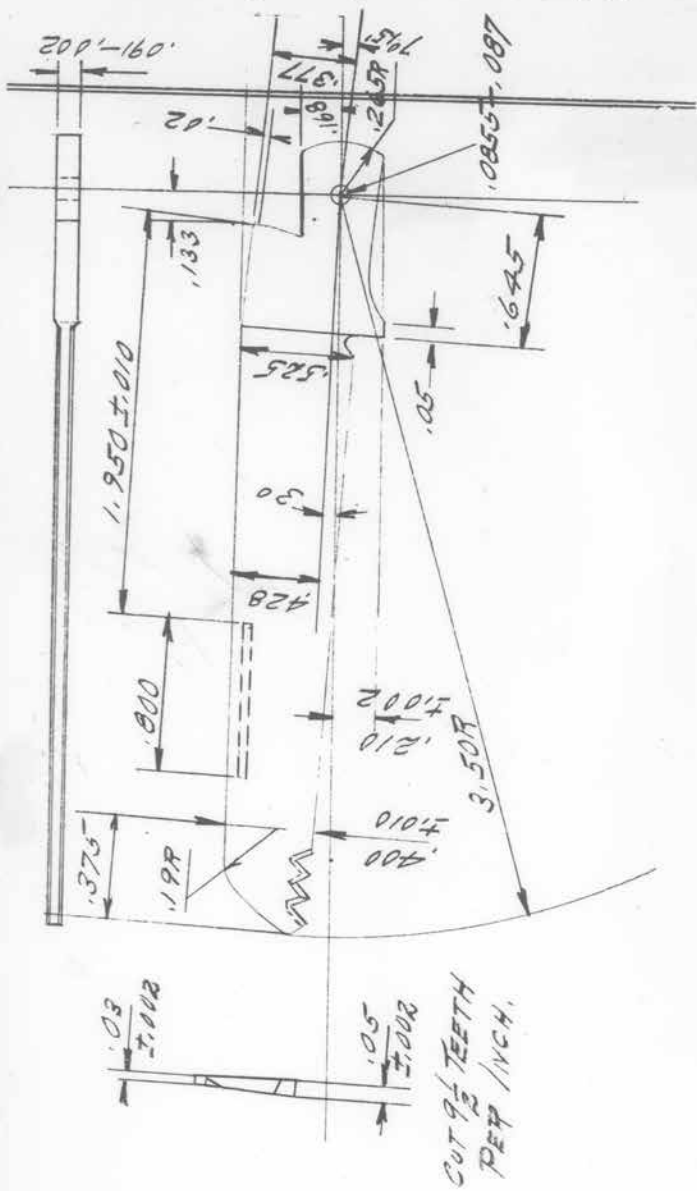


C000804F  
H2615P



3- 4

PRUNER SAW BLADE H2615P78.

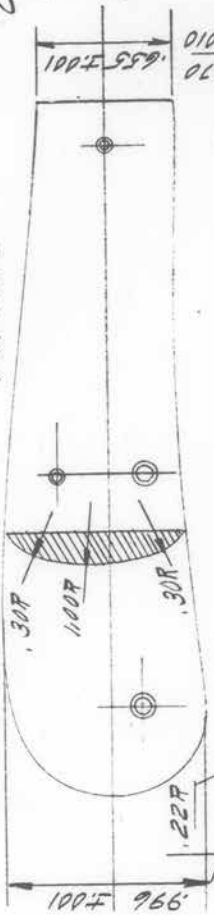


#10

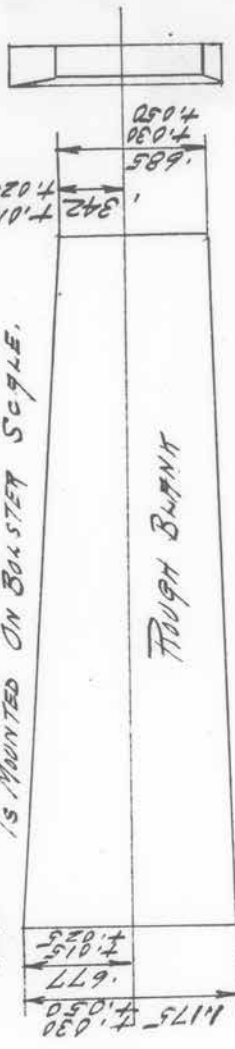
COCOBOLA COVER  
H/1610 PROG & PUC.

FINISH.

Full Size



NOTE - HOLES NOT DRILLED UNTIL COVER IS MOUNTED ON BOLSTER SCYCLE.

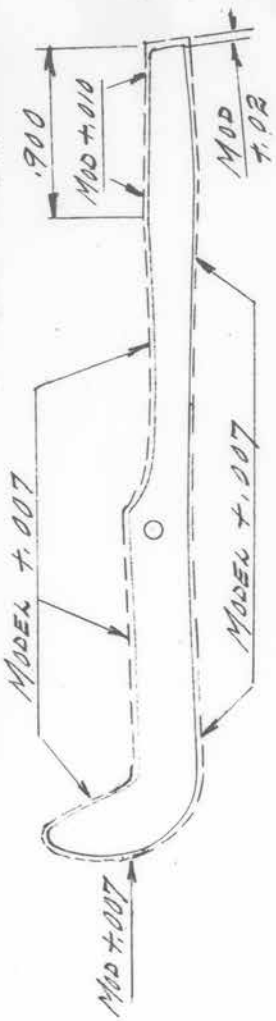


ROUGH BLUNT

CENTER SCALE TEMPLET EQUALS MODEL.  
" " " " +.007  
" " " " FULL FINISH.



POCKET & PEN SPRING H1610PIS & H2615P2S



- 8 (AR) Mill front edge, chisel and burr.  
 Last blade, Two blades in set.  
 Power Miller, jaws 43343,  
 Blocks H1920 P18, Cutter 33201
- 
- 1014, Form cutter 33232-778, Hays <sup>31136</sup>
- 9 (AV) Rough glaze tang sides, Mill  
 Header, 1F Dressed Wheel.
- 10 (AW) Stamp trade mark, Power  
 Press # 18 Bliss, Fixture N41996.  
 1/2" Stamp 17577-593
- 11 (AX) Straighten - Bench - Hammer.
- 12 (AY) Drill, 098" Drill Press, Jig 43336  
 # 31137 Plug Ga., # 31138 Plug W. Ga.  
 # 31139 Plate Location, 31140 Set Up.
- 13 (AZ) Burr, Horizontal Spinner # 26554  
 Two c' sinks 33227-299
- 14 (BD) Grind Bevel (Soft) Flaming Grinder  
 Block 43281, 14" x 3 1/2" x 5/8" Wolf  
 Special Process Wheel # 60- 1/2 1/2.
- 15 (BE) Inspect,  
 A Straighten 100% # 31139 Plate Loc.  
 B Grinding # 31137 Plug Ga.  
 and the DVH # 31138 Plug W. Ga.
- 16 (BT) Rack up blades - Bench - Racks.
- 17 (BF) Hardin - Card C-99
- 18 (BG) Temper - Card C-99

2. Send to DHP2 Lot Room X100

Spring H1920 P15

1.51 (AE) Grease fins & Color Inside

Palish frame & #120 Slurred Wheel (S)

2.51 (AF) Inspect 100% Visual - Bench  
Send to DHP2 Lot Room.

Cover Seal H1920PR-Pl.

1R (AH) Saw Covers to length, Hand Miller

Fixture # 43301 - Two Metal

Slitting Saws 4" X  $\frac{1}{32}$ " X 1" Hole  
B. Q. # 962(S) # 31065. (Length)

16 (AJ) Saw Covers to length, (As Above)

2R (AK) Drill cover rivet holes from  
male, Drill Press #125  $\frac{1}{8}$ " Drill (S)

# 28634 Plug .049 (S)

24 (AL) Drill cover rivet hole from male.

3R (AM) Insert cover rivet wire, (As Above)  
and clip off - Bench fixture HS210

34 (AN) As Above

4R (AP) Rivet Cover Rivets, Riveting Mach -  
Coil & Pin # 39542 - 2 - 3

46 (AR) As Above

5R (CE) Inspect 100%, Visual - Bench.

56 (CF) " " " # "

6R (ES) Drill spring rivet hole - Drill Press  
.087 Drill (S), # 31066 Plug (S)



- 1(BG) 4 Assemble shaft Bench.
- 2(BH) Fine glass sandedges.
- 3(BJ) Assemble shaft & flange.
- ~~4(BK) Grind joints, flange #~~

43171(S) #46 Solid Emery Wheel (S)

- 5(BL) Adjusting complete Bench.
  - A Set back back.
  - B Set back in
  - C Grind in blades
  - D Straighten blades

6(BM) Inspect 10%

- 7(BN) Hafting consists of
  - A Rough grind back, Pal. frame
  - B. Dry fine back (#46 Emery Wheel)
  - C. Dress fine back (#95 Diamond Wheel)
  - D Rough turn blades & caps #90 D "
  - E Dress fine " " " #120D "
  - G Hollow buff " " "

8(BP) Buff covers, blades

- 9(BR) Inspect 10% - Bench:
  - A. Functioning of knife
  - B. Pin show on blades caps & cracked covers.

10(CF) W/section (Wash Hot Yandy)

11(BS) Fine glass & color wash with  
 lens wash, wash from emery (S)

3

X100

- 6h.(AT) Same as above
- 7R(AU) Ream of ring rivet hole .10/5 Drill (S)
- 7h(AV) As above

8R(AW) Recess for shield, Shielding machine - Fixture # 43044(S)

Cutter 33420-113 (S)

9R(AX) Drill on shield, Drill Press #125 M/M Drill (S)

10R(CD) Pin on shield & clip off wire-

11R(CE) Pin on shield - Pin Mach.

12R(AV) Buff inside of yoke - Polish frame, Buff wheel(S)

12h.(AZ) As above.

13R(BA) C'sink black rivet hole in balster and handle rivet hole in Cap. Drill Press 120 C'sink

13h(BB) As above.

14R(BC) Ream black rivet hole in balster and handle rivet hole in Cap Reamer # 29573-15 (S)

14h(BD) As above

15R(BE) Inspect 100%, Visual - Bench.

15h(BE) As above.

Send to DHP2 Lab Room

53 (AF) Print itch symbol on  
ribcage of blade

Pinch - Jiptone - Power - Tang

56 (CB) Head & Back Pins.

A Inspect metal back pins.

B. Pin points

C. Whip & Handle.

D. Head.

E. Vase.

57 cc of oil - return to seal  
 Send to Warehouse.

12(BT) Fine glaze & calar wedge  
Pal, frame #120 D, wheel.

~~13(BV) Wipe & wipe blade & chisel.~~

Brush joints, Indian del.  
Stone (S)

14(BV) Inspect 100%

A Functioning.

15(BW) Calar & glass buff -  
Pal, frame #120 D, wheel.

50(BX) Inspect 100%

51(BY) Brush & Lime - Bench.

A Brush joints.

B Open blade.

C Dip blade in lime.

D Clean nail mark.

E Brush joints.

52(BZ) Clean inside

A Clean inside - brush.

B " front edge of tang.

53(CA) Wipe blade & knife.

A Wipe blade & remove lime, done.

B Clean joints.

C Wipe knife.

D Inspect for defects while  
performing the above

- Pocket Blade - #X100.  
19 (BK) Test-Bench-Vice) Hammer.  
Send to DHPZ.

---

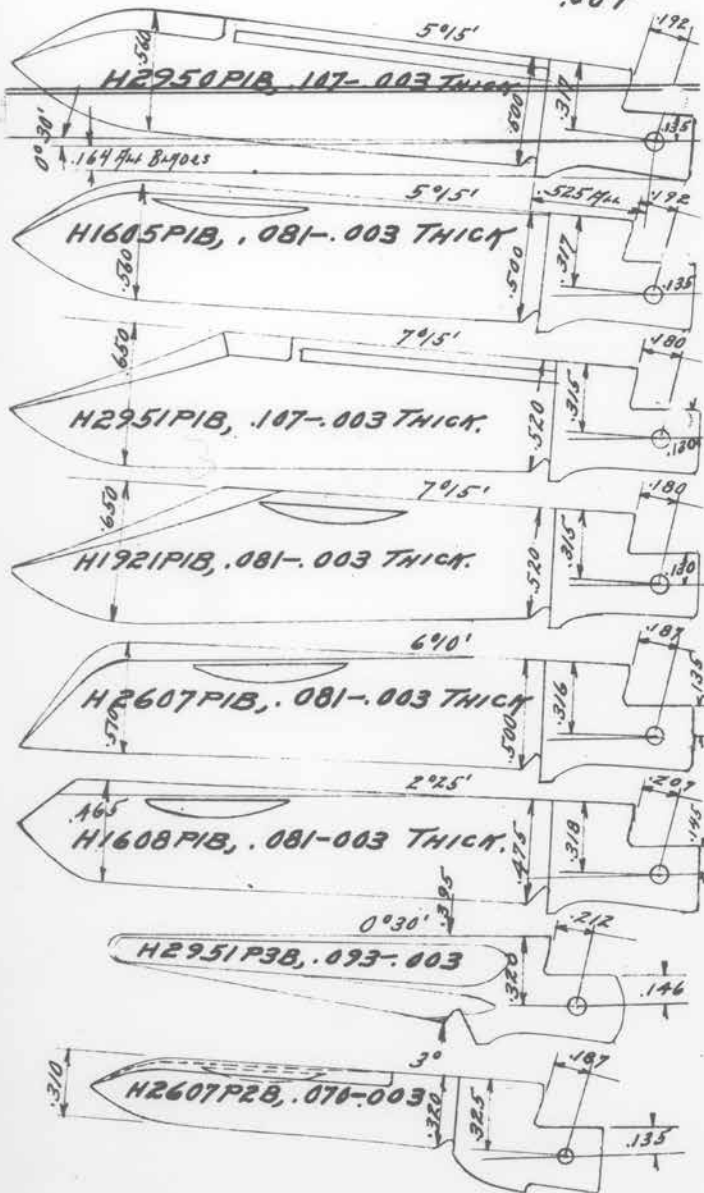
20 (BH) Tumble in sandust, Tumbling  
Bll.

21 (BK) Grind Bevel. Flaring Grinder  
Holder 43281-14" X 3 $\frac{1}{2}$ " X  $\frac{5}{8}$ " Wolf Special.  
Process Rim Wheel #60 L 2 $\frac{1}{2}$ .

22 (BM) Tumble in sandust, # 28047  
Thickness, Tumbling Bll.

23 (BN) Inspect. Visual 100% - Bench  
Send to W.M. Staus #29297. indication.

# 200, BLADES, Full SIZE. HOLE .0855  
 .087



FULL SIZE BLANK FOR #200 PUNCH BLADE.  
 TEMPLAT 28624-9, SAME 5/26/22

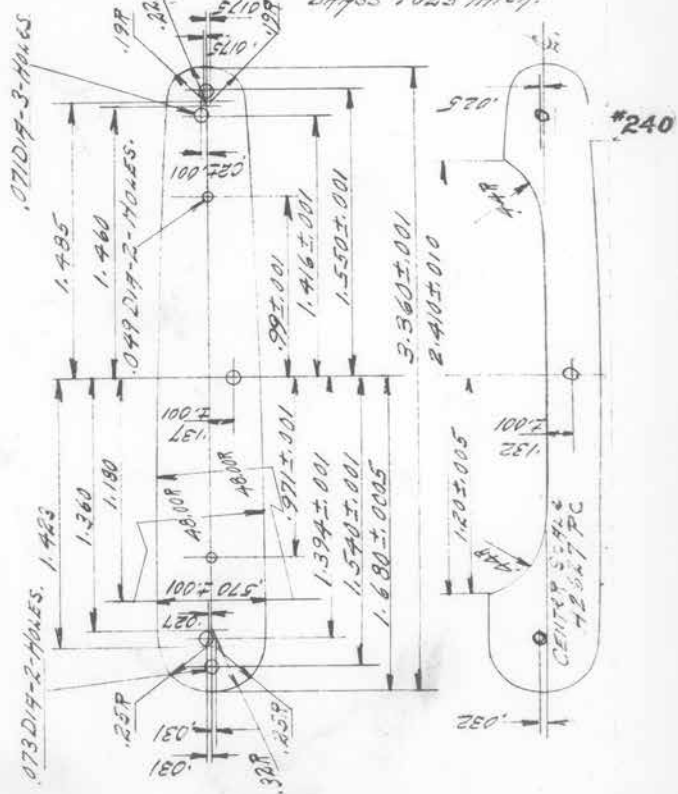


	FORG-465-	WIDTH-.537-	(140
BOLSTER-	LENGTH FIN.-429-		533-THICK
	FORG-.338-	WIDTH-.686-	.156 THICK
CAP. LENGTH-	FIN-.229-	" .682-	
BARROW. "	FORG. 1.228-	" .605-	.156 THICK.
	FIN. 1.189-	" .601-	

23 - 24

SCALE - H2627 PRIB - Full Size

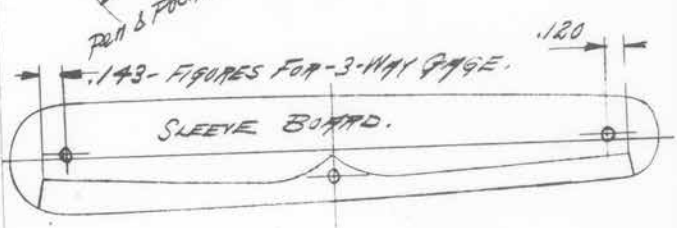
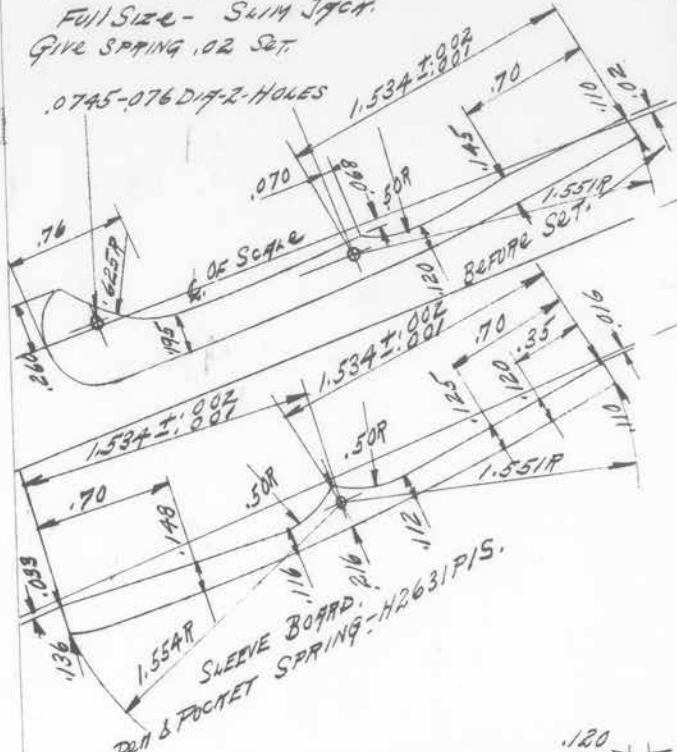
BRASS .025 THICK.



CENTER SCALE - PROFILE EQUIS SCALE,  
MODEL T. 007 FT ALL POINTS EXCEPTING CUT OUT.



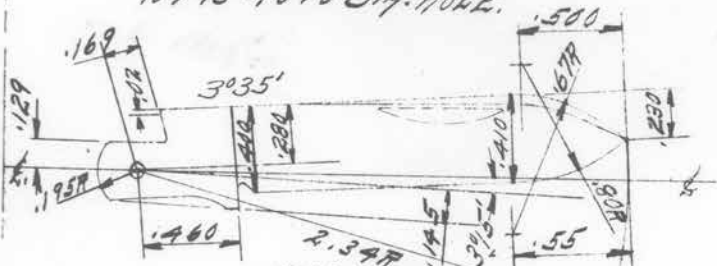
POCKET SPRING H2627P1S-.107±.004 THICK.  
 PLN SPRING H2627P2S-.070±.004 THICK.  
 FULL SIZE - SLIM JACK.  
 GIVE SPRING .02 SET.



H 2631 P1B - SLEEVE BOARD.

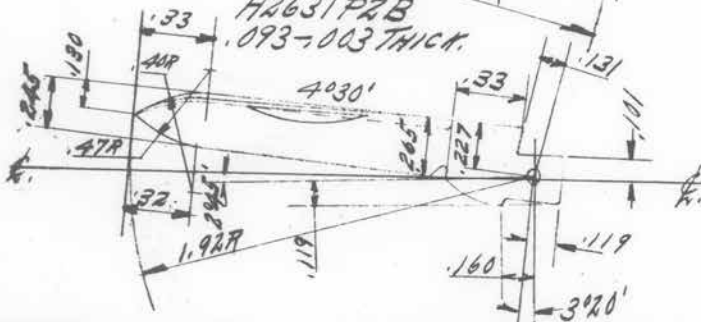
.093-.003 THICK.

.0745-.076 DIA. HOLE.



H 2631 P2B

.093-.003 THICK.



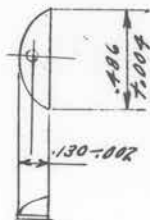
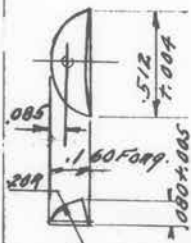
Full Size BLANK FOR FORGING BLADE  
H 2931 P1B



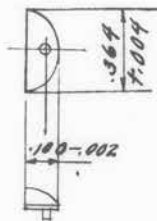
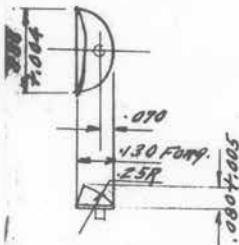
Full Size BLANK FOR FORGING BLADE  
H 2627 P1B



TIP H2335PR5B - Large



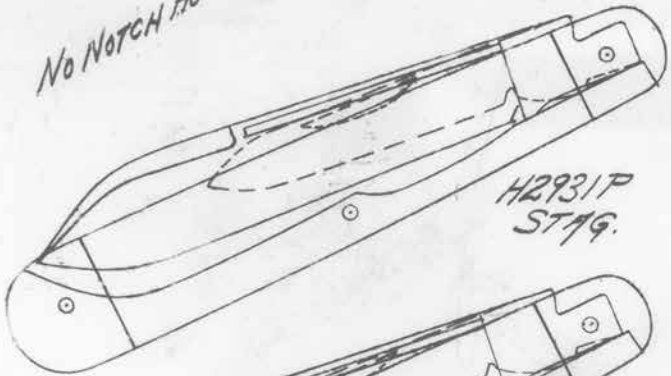
TIP H2335PR4B - Small



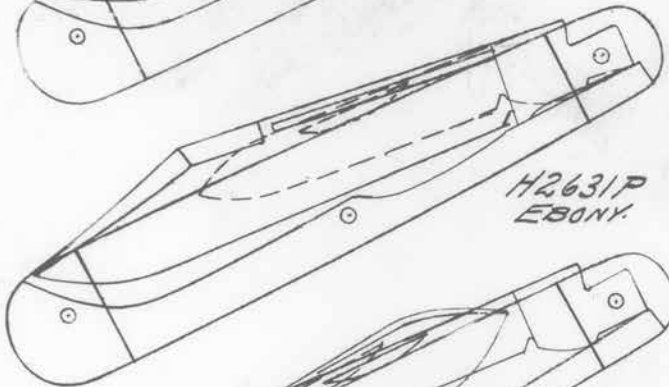
Plugs .050 ± .002 DIA. .062 ± .002 LONG.

NO NOTCH HOLLOW

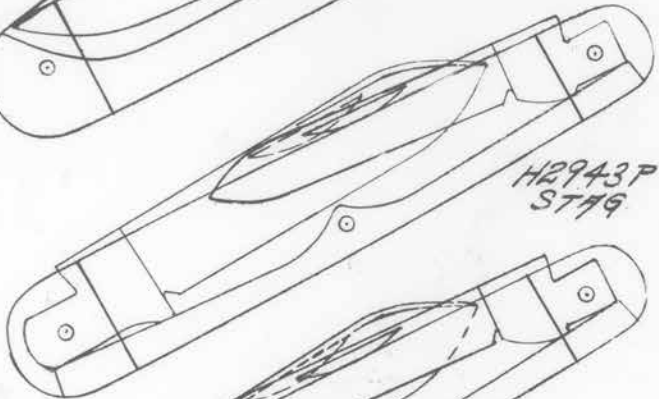
H2627P  
EBONY.



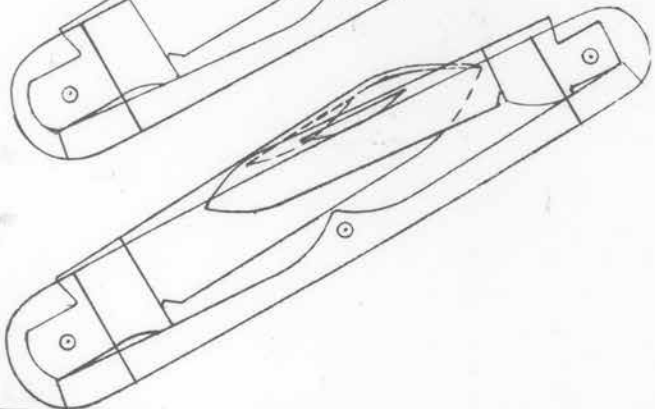
H2931P  
STAG.



H2631P  
EBONY.



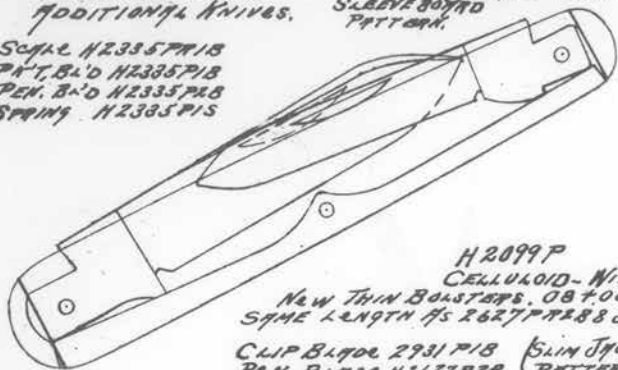
H2943P  
STAG.



FEB 1<sup>ST</sup> 1923  
ADDITIONAL KNIVES.

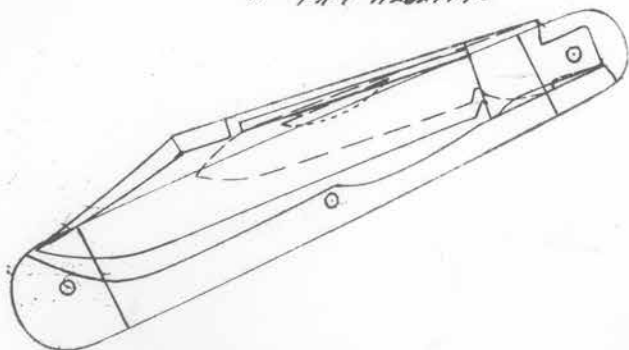
STAINLESS { H2335P  
PEARL-TIPS.  
SILVER BRASS  
PATTERN.

SCALE H2335P1B  
PNT. BLD H2335P1B  
PEN. BLD H2335P2B  
SPRING H2335P1S



H2099P  
CELLULOID - WITH  
NEW THIN BOLSTERS, 084005  
SAME LENGTH AS 2627P2838.

CLIP BLADE 2931P1B (SLIM JACK)  
PEN BLADE H2627P2B (PATTERN)  
SPRING PEN. H2627P1S  
" PNT H2627P1S



WINCHESTER POCKET KNIFE #300  
ST# H3942P

USE NOTCH HOLLOW

#300

H3942PIS FERR. H3341P

H3942PIS

USE NOTCH HOLLOW

ST# H3975P

H3942PIS

H3942PIS  
USE NOTCH HOLLOW

ST# H2975P

H3942PIS

H3942PIS  
USE NOTCH HOLLOW

H3942PIS & H2975PIS

330

STAR H2926P

USE NOTCH HOLLOW.

STAR  
H2971P

H3942PIS & H2970PIS  
USE NOTCH HOLLOW  
PER J.E.M. 8/25/22

CELLULOID  
H3011P

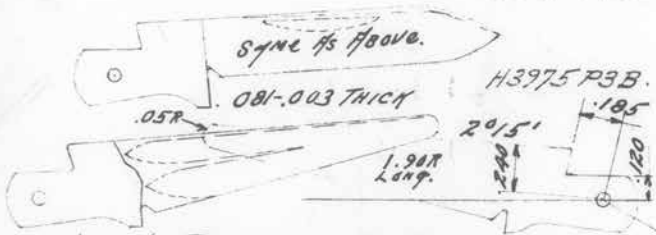
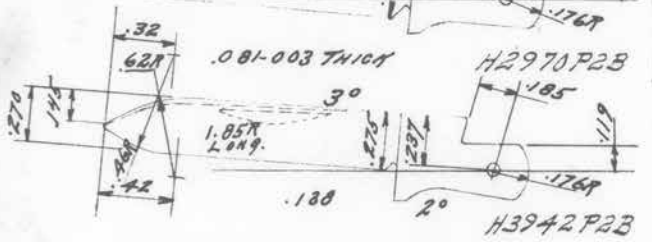
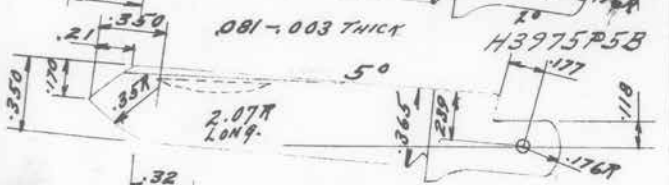
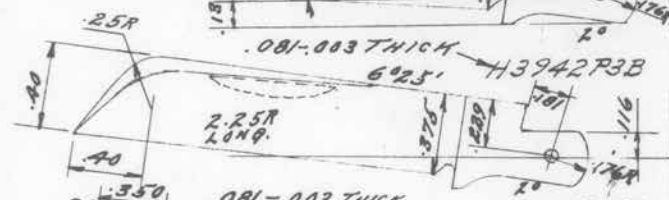
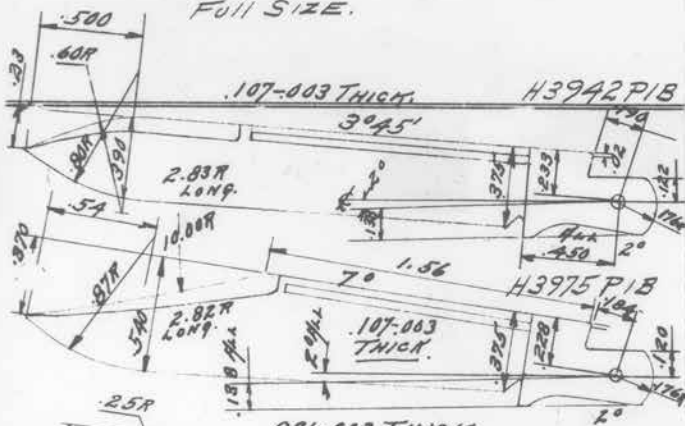
H2971P2S  
USE NOTCH HOLLOW

H3942PIS

H3942P2S

BLADES.  
FULL SIZE.

# 300

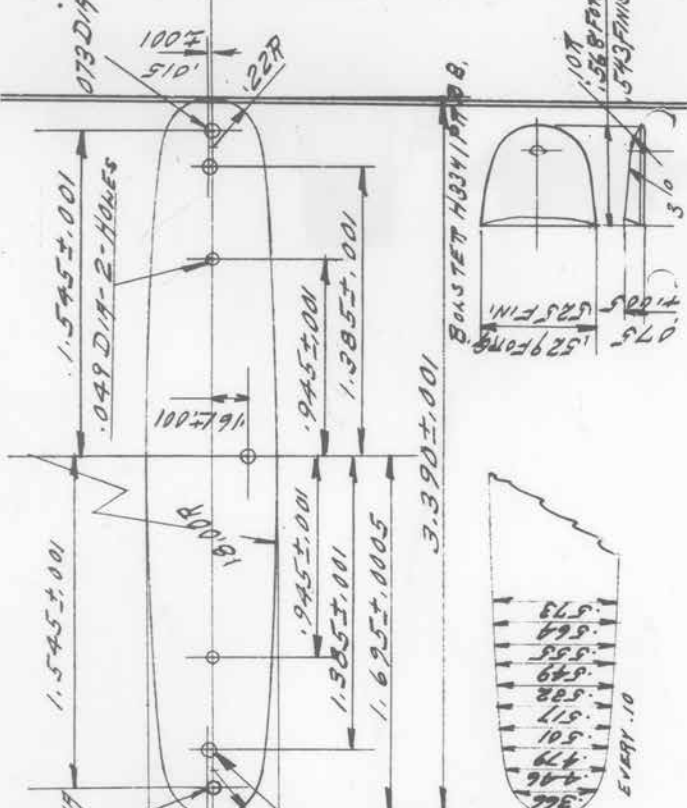


USED IN BOTH ENDS OF KNIFE. 3/15/1922

35-36



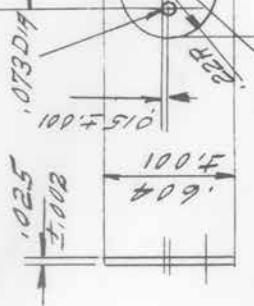
# 300 SCALE, H3942 PRIB



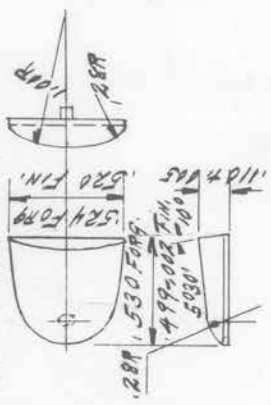
EVERY .10

.366
.406
.479
.501
.517
.528
.549
.555
.569
.573

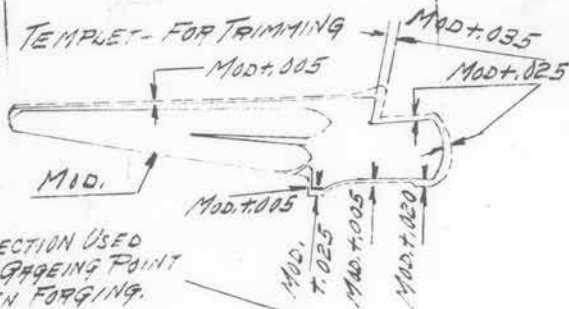
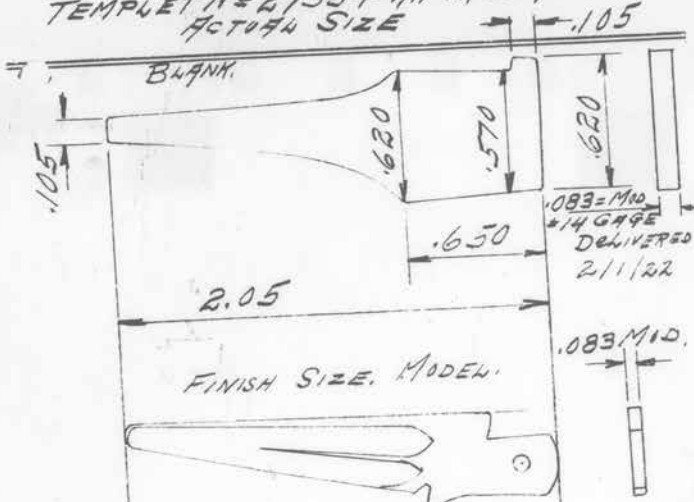
.071 DIØ 3-HOLES



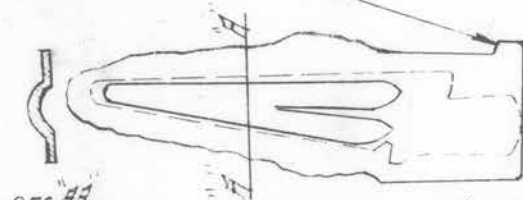
BUNSTER H3942 PR2B



WINCHESTER POCKET KNIFE #300  
 PUNCH BLADE - H3975 P3B.  
 TEMPLET N<sup>o</sup> 27554-A, FOR BLANKING.  
 ACTUAL SIZE

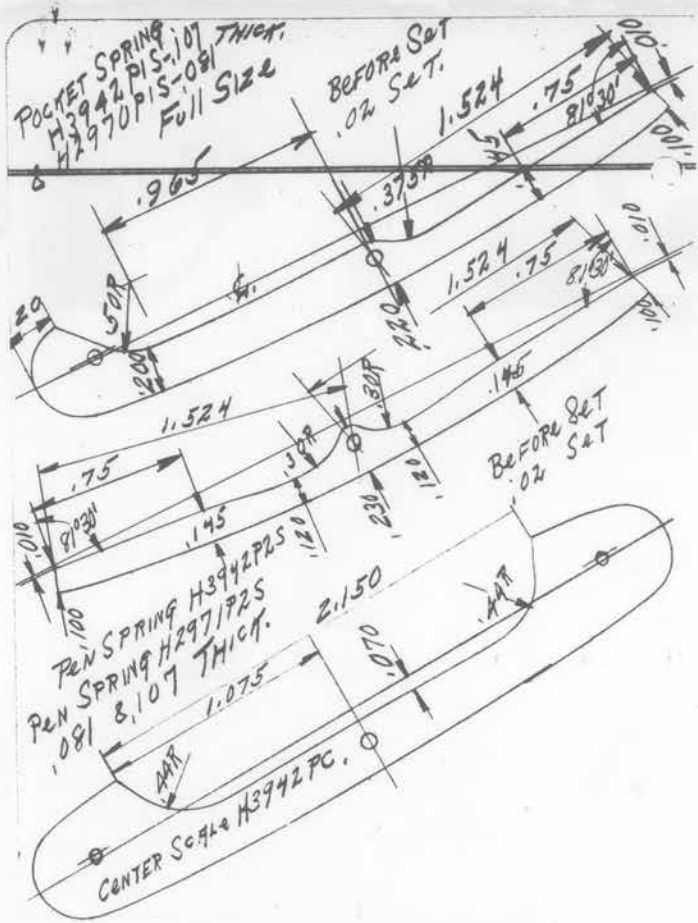


PROTECTION USED FOR GAGEING POINT WHEN FORGING.



SEC. AA

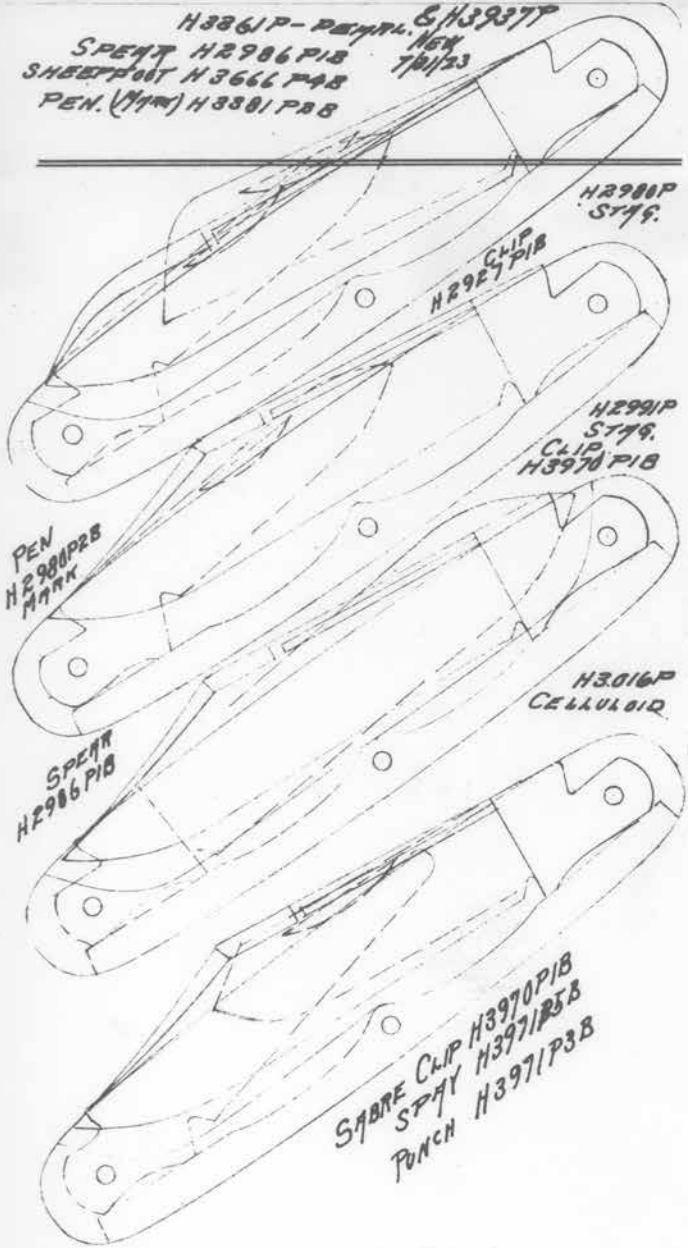
AFTER FORGING FROM ABOVE BLANK.  
 2/1/22.



BLADES MEASURED 9/26/22.

	OPEN ANGLE-	CLOSED ANGLE-	INCLUDED ANGLE.
CLIP.	4°45'	7°0'	90°0'
SPEAR	6°10'	3°45'	5°25'
S' FOOT	6°10'	6°25'	8°25'
SPAY	8°20'	5°0'	6°50'
PEN	8°40'	3°0'	4°55'
PUNCH	9°0'	2°15'	4°15'

H3861P - PEN. 6/H3937P  
SPENT H2986P1B NEW  
SHEETFOOT H3666P4B 7/1/23  
PEN. (M/M) H3881P2B



H4950P ST79.  
SHORT SPEAR H4970PIB  
CYN. OPENER H4970P8B  
SCREW DRIVER H4970PI5B  
PUNCH H3971P3B

NOTCH HOLLOW

H4951P  
ST79

MIRLIN SPEAR  
H4971PI8B

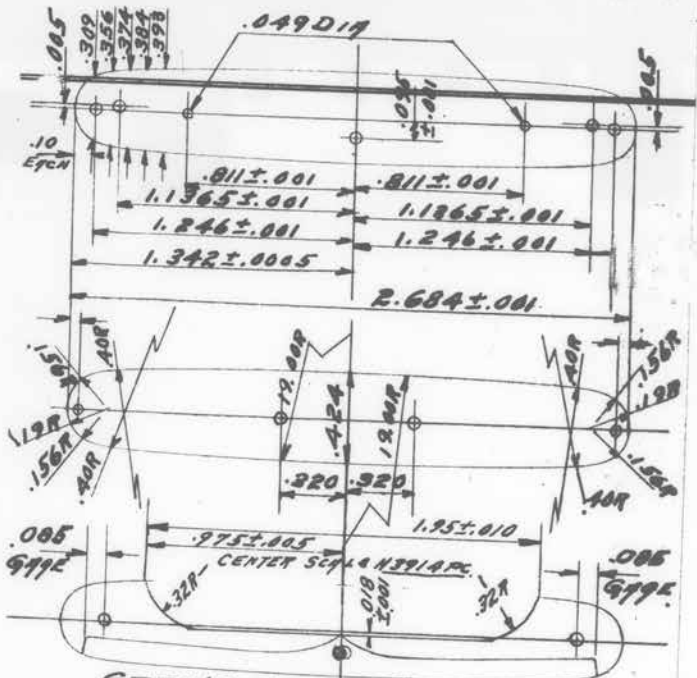
H2986P  
ST79

SPEAR H2986PIB - PEN H2986P2B.

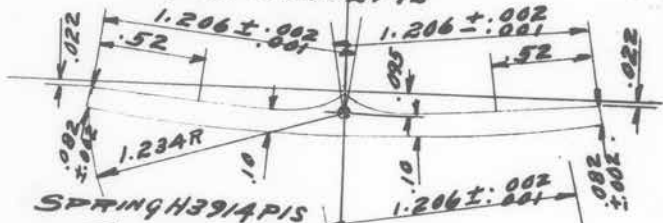
H2648P  
EBONY.

SPEAR H2986PIB - PEN H2986P2B.

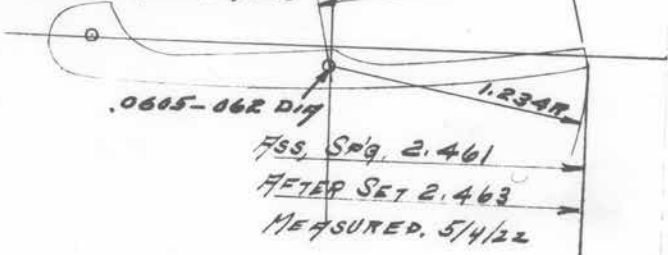
WINCHESTER POCKET KNIFE. Full SIZE  
SCALE. H2902P1B



SPRING H2902P1B



SPRING H3914P1B



.0605-.062 DIA

FSS, Sp'g. 2.461

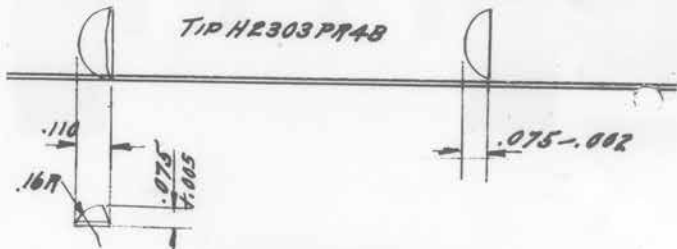
AFTER SET 2.463

MEASURED. 5/4/22

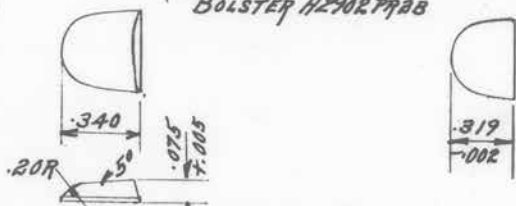
ROUGH.

FINISH.

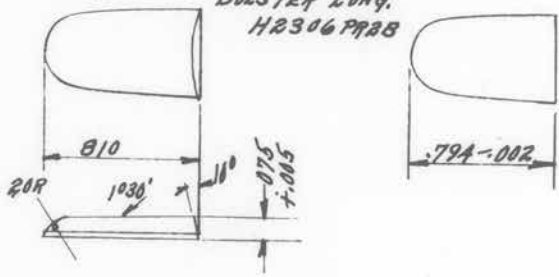
TIP H2303 P9A8



BOLSTER H290R P9A8



BOLSTER LONG.  
H2306 P9A8



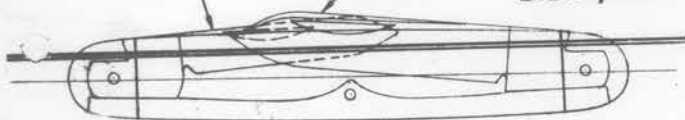
WINCHESTER POCKET KNIFE.  
NOTCH HOLLERS IN H2914P-ONLY.

#311

H2902P28  
PEN

H2902P18  
POCKET

STAG  
H2902P  
BOLSTER SHORT.



H2902P28  
PEN

H2902P18  
POCKET

PEARL  
H2306P  
BOLSTER LONG



H2903P48  
FILE

H2902P18  
POCKET

PEARL  
H2303P  
TIPS



H2902P28  
PEN

H2902P18  
POCKET

N. SILVER  
SHADOW  
H2206P



H2303P48  
FILE

H2902P18  
POCKET

N. SILVER  
SHADOW  
H2211P



H2303P48  
FILE.

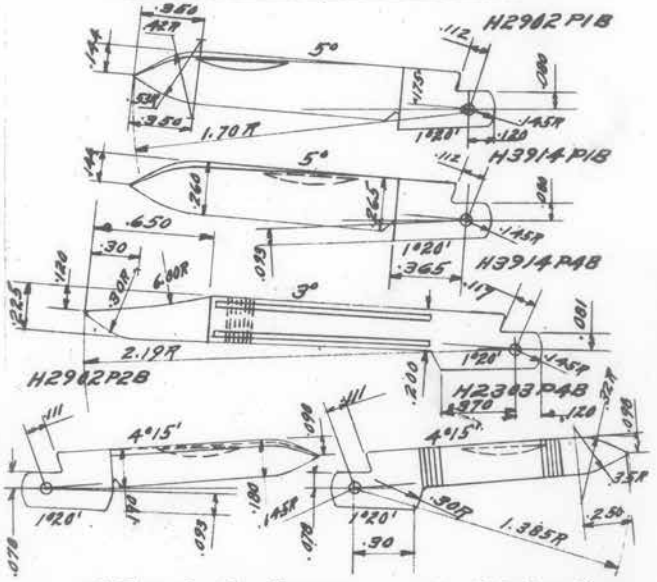
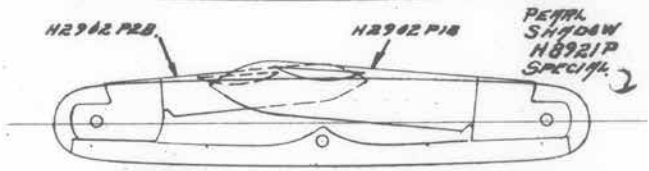
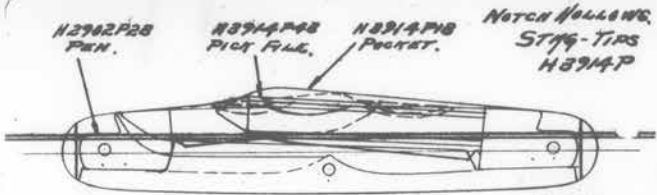
H2902P18  
POCKET.

CELLULOID  
SHADOW  
H2056P



43-44





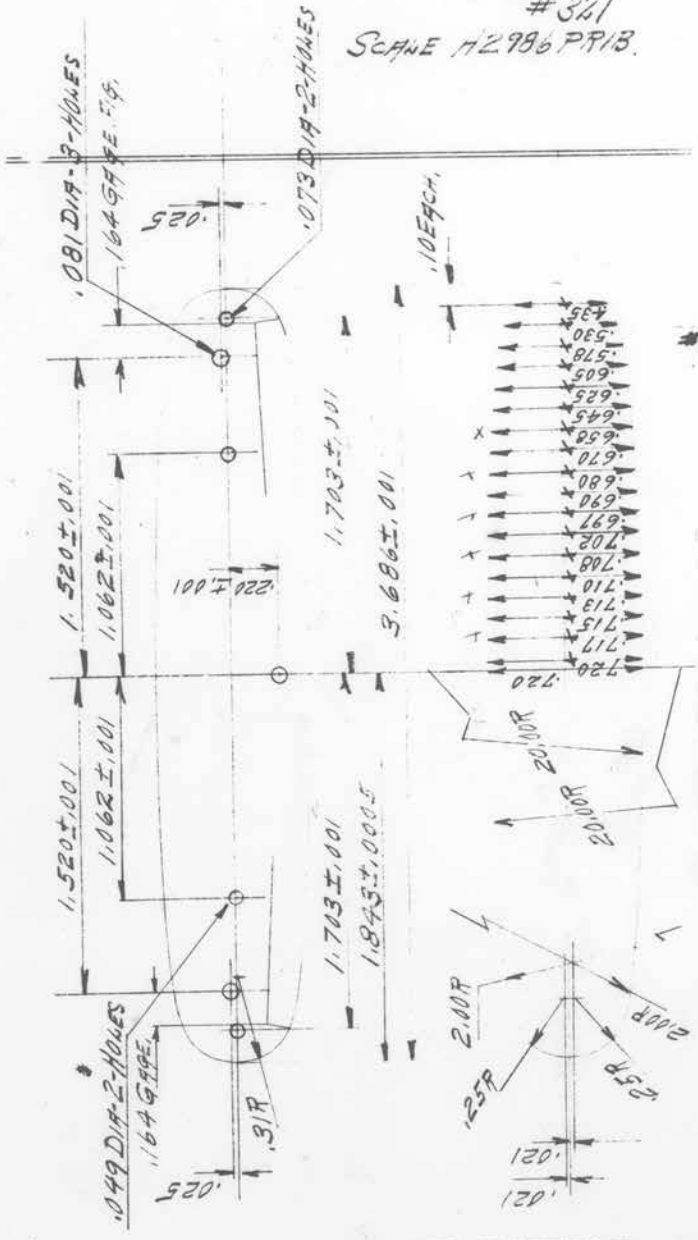
.02 FLAT ON FULL BLADES, -.0645-.062 DIA. HOLE.  
 FULL BLADES .063-.003 THICK.

POCKET BL'D (2) OPEN ANGLE 7°, INC. ANG. 6°20'  
 PEN & FILE (2) OPEN ANGLE 8°, INC. ANG. 5°35'  
 PICK FILE OPEN ANGLE 5½°, INC. ANG. 4°20'

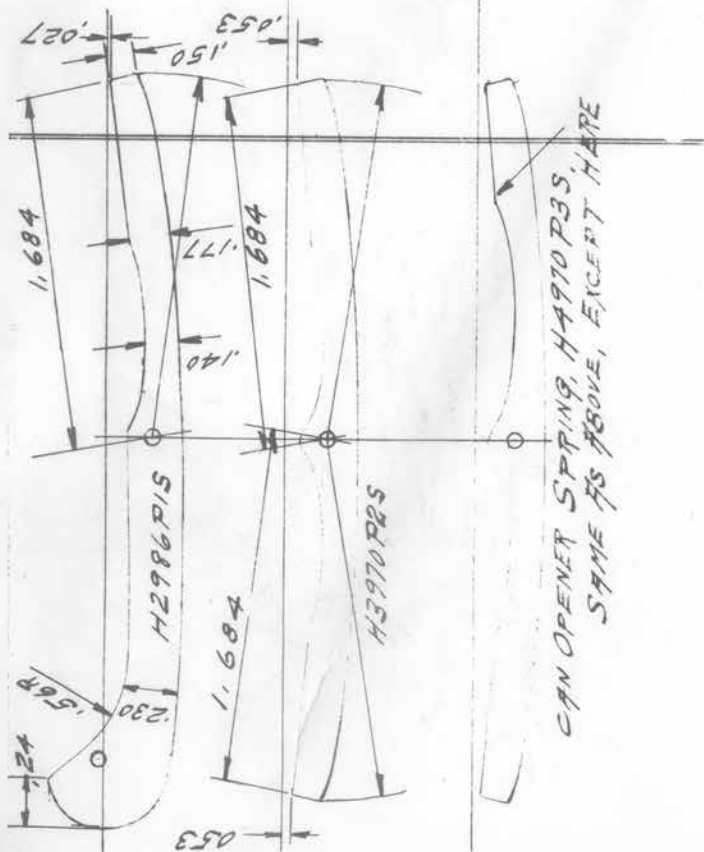
5/6/1922

#321  
 SCANE H2986 P1/B.

#321

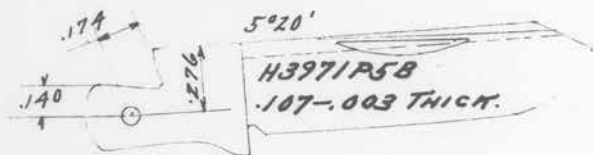
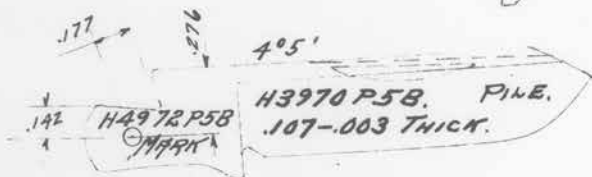
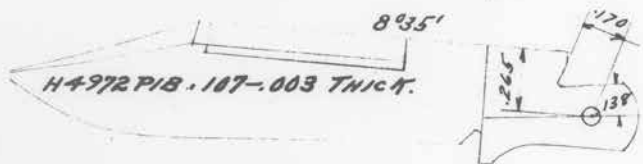
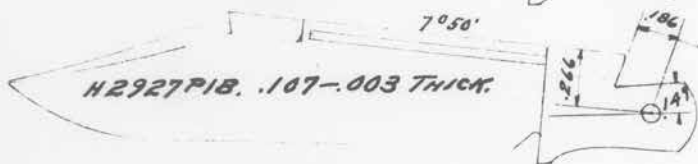
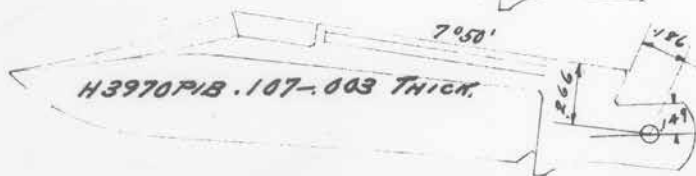
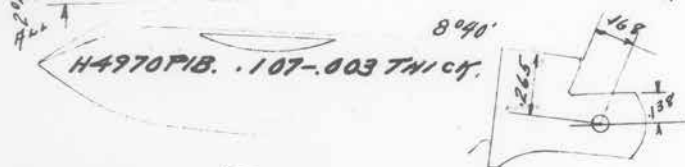
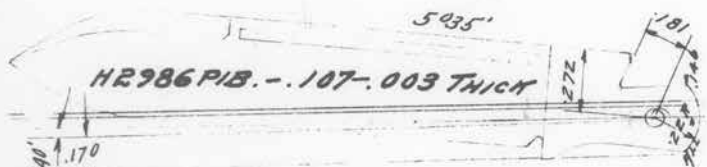


45-46

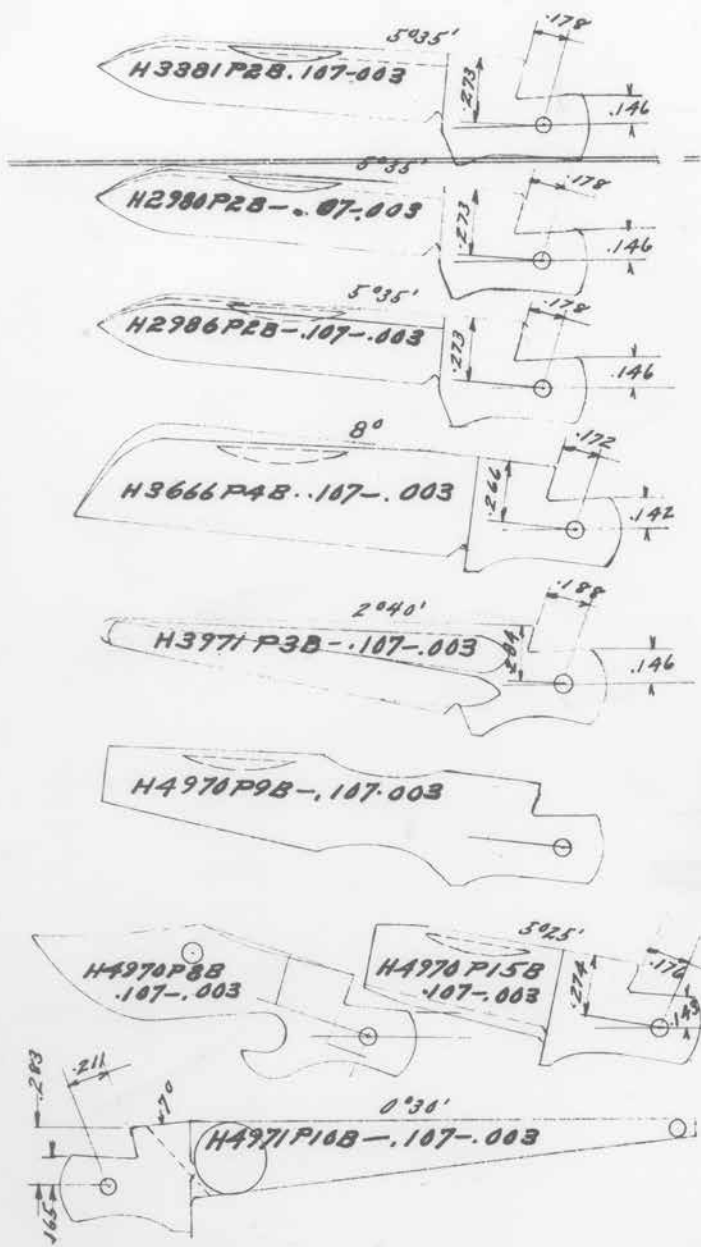


45-46

#321



47-48



47-48

H2927P-ST49

#321

CLIP H2927P1B  
PUNCH H3971P3B  
(2) SPRING H2986P19



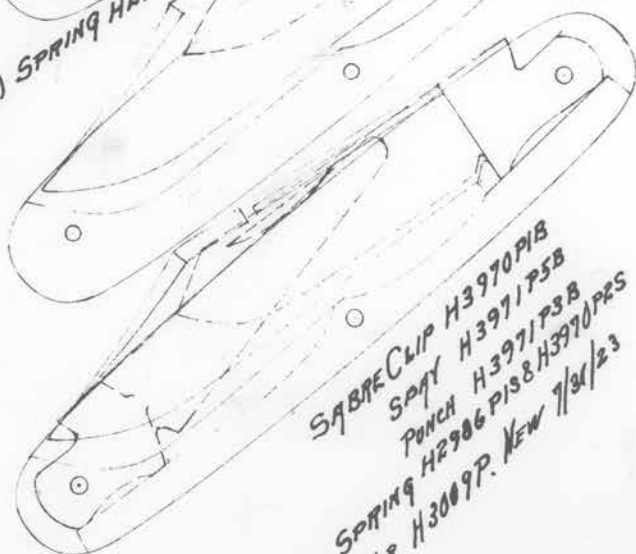
H2973P  
ST49

CLIP H2927P1B  
PEN H2986P2B

(2) SPRING H2986P19



H3979P  
ST49



SABRE CLIP H3970P1B  
SPRY H3971P5B  
PUNCH H3971P3B  
SPRING H2986P19 & H3970P2S  
Also For H3009P. NEW 7/31/23

H3950P-STAG  
SABRE CLIP H3970P1B  
SHEEPFOOT H3666P4B  
SPRY (MARK) H3970P5B  
SPRING H2986P1S  
" H3970P2S

H3951P  
STAG.  
SPEAR H2986P1B, SPRAY H3971P3B, PUNCH H3971P3B

H3646P  
EGONY.

SPEAR H2986P1B  
SHEEPFOOT H3666P4B

H4952P  
STAG.

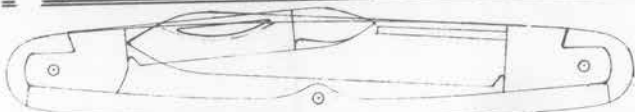
PUNCH  
H3971P3B

(2) SPRINGS H3970P2S.  
SHORT CLIP H4972P1B  
SHEEPFOOT H3666P4B  
PUNCH H3971P3B  
SPRY H4972P5B

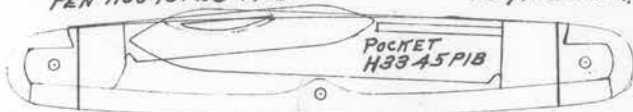
(3) Notch Hollows  
 PEN H3345P2B-MARK.  
 FILE H3345P4B-PILE.

#400  
 H3345P  
 PEARL SHADOW.

POCKET BLADE H3345P1B



PEN H3345P2B-MARK. (3) Notch Hols. H3343P.  
 PEN H3343P2B-FILE. PEARL BOLSTER.

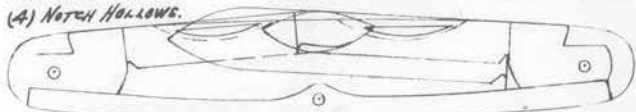


PEN H3345P2B-MARK. (3) Notch Hollows. H3344P  
 FILE PEN H3345P4B-PILE STAG-TIPS.



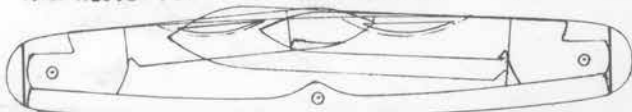
PEN H3345P2B  
 FILE H3345P4B  
 (4) Notch Hollows.

PKT. H4331P1B H4331P-  
 PEN H3345P2B PEARL-SHADOW.



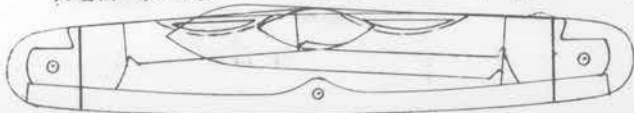
(4) Notch Hollows.  
 PEN. H3345P2B.  
 FILE. H3345P4B.

PKT. H4331P1B. H4341P  
 PEN. H3345P2B. PEARL-TIPS.



(4) Notch Hollows.  
 PEN. H3345P2B.  
 FILE. H3345P4B.

PKT. H4331P1B. H4340P  
 PEN. H3345P2B. PEARL BOLSTER.



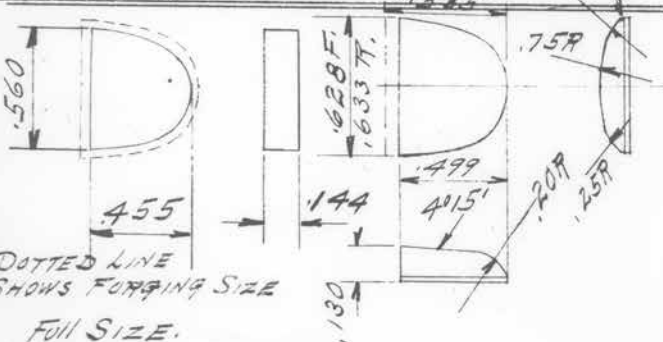
LAST (3) USE ALL 4 BANDS - THE SAME.



WINCHESTER POCKET KNIFE, #321

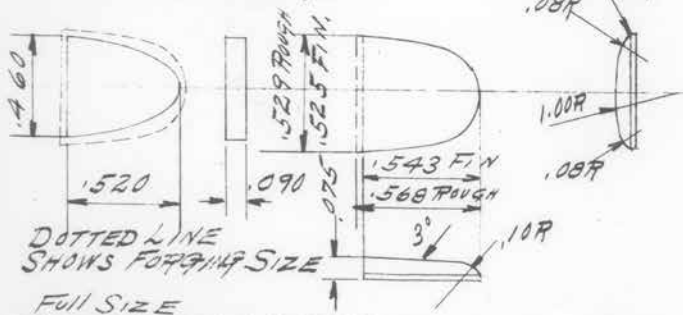
TEMP # 29329-A PEARL OVER FOR STAG HANDLE.

BLANK FOR H2986 PR2B-STAG.



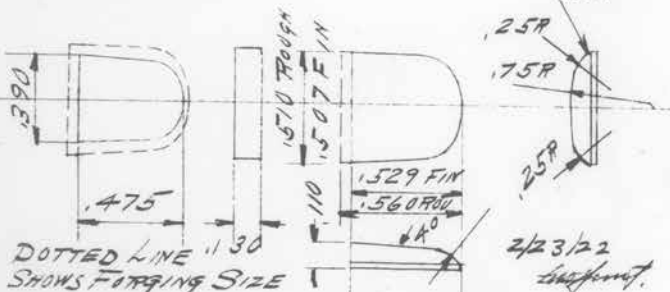
BLANK FOR H3341 PR2B  
TEMP # 26630-A

# 300

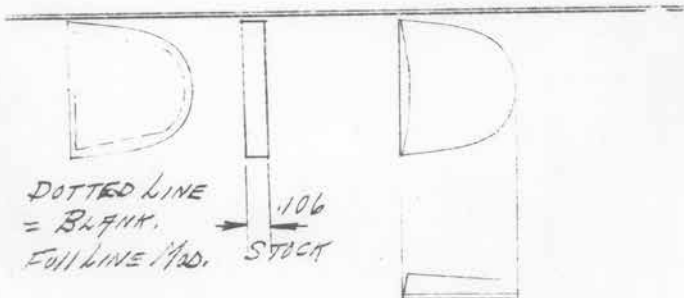


BLANK FOR H3961 PR2B  
TEMP. 28102-A.

# 4050



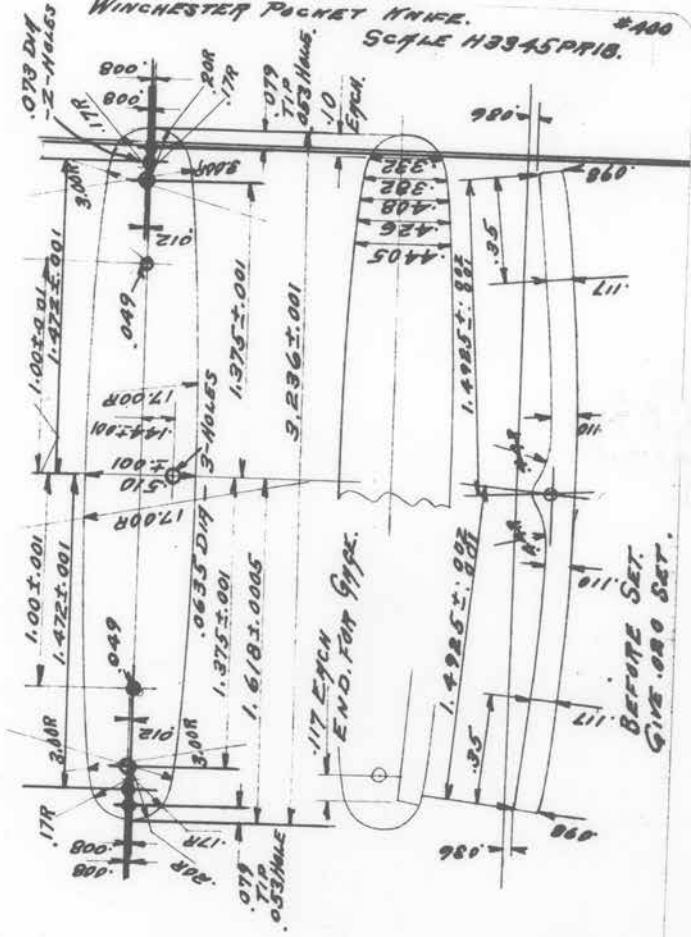
BOLSTER H3321 PR2B  
TEMP# 27781-A  
Full Size.



WINCHESTER POCKET KNIFE.

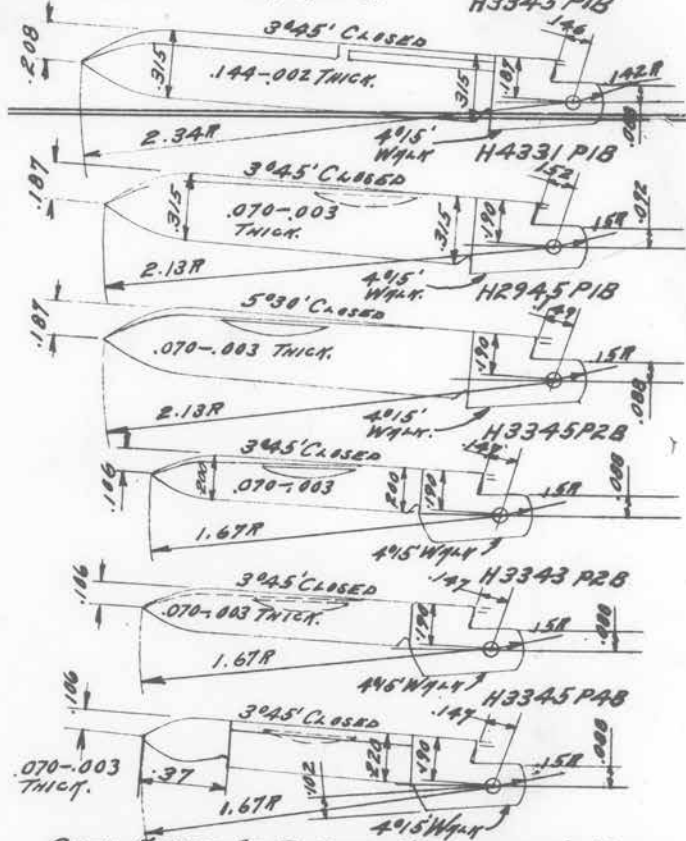
#400

SCALE H3345PR18.



.0675-.069 DIA HOLES.

H3345 PIB



OPEN ANGLES OF BLADES ASSEMBLED IN KNIFE.

3 BLADED-POCKET 8°15' - H3345 PIB.

4 " " 6°15' - H4331 PIB.

2 " " 6°15' - H2945 PIB.

PEN BLADES (2) 8°15' - (H3345 P2B.

FILE " (1) 8°15' - H3343 P2B.

3&4 BLADED POCKET TO LINE POINT TO POINT WITH

PEN BLADES. C/N 10158 709-1982

FILE TEETH 70 TO 76 PER INCH.

(3) NOTCH HOLLOW

PEN H3345P2B - MARK.  
FILE H3345P4B - FILE.

H3345P  
PEARL SHYDOW.

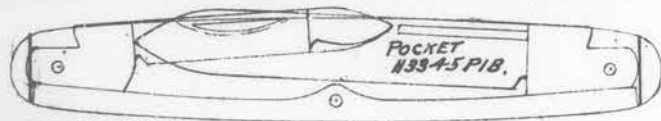
POCKET BLADE H3345P1B



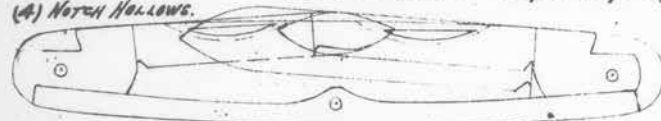
PEN H3345P2B - MARK. (3) NOTCH HOLLOW. H3343P.  
PEN H3343P2B - FILE. PEARL BOLSTER.



PEN H3345P2B - MARK. (3) NOTCH HOLLOW. H3344P  
FILE PEN H3345P4B - FILE. STAG-TIPS.



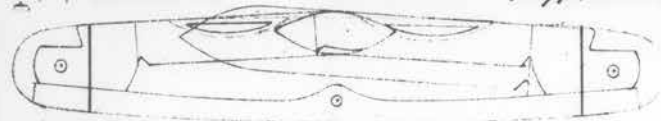
PEN H3345P2B PKT. H4331P1B H4331P.  
FILE H3345P4B PEN H3345P2B PEARL-SHYDOW.



(4) NOTCH HOLLOW. H4341P  
PEN. H3345P2B. PKT. H4331P1B. PEARL-TIPS.  
FILE. H3345P4B. PEN. H3345P2B.



(4) NOTCH HOLLOW. H4340P  
PEN. H3345P2B. PKT. H4331P1B. PEARL BOLSTER.  
FILE. H3345P4B. PEN. H3345P2B.



LAST (3) USE ALL 4 BLADES - THE SAME.

PEN H3345P2B  
FILE H3345P4B  
(4) NOTCH HOLLOW'S.

PAT. H4331P1B. H4940P  
PEN. H3345P2B. STAG-BOLSTER



PEN H3345P2B.  
FILE H3345P4B.  
(4) NOTCH HOLLOW'S.

PAT. H4331P1B H4941P  
PEN H3345P2B STAG-TIPS.



PEN H3345P2B  
(1) NOTCH HOLLOW

PAT. H2945P1B H2945P.  
STAG-TIPS.



PEN. H3345P2B  
(1) NOTCH HOLLOW.

PAT. H2945P1B H2344P.  
PEARL TIPS.



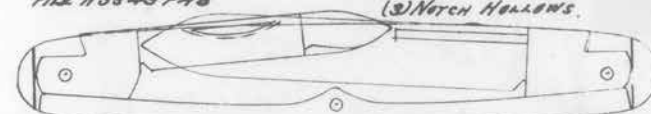
PEN. H3345P2B.  
(1) NOTCH HOLLOW.

PAT. H2945P1B H2628P.  
EBONY-BOLST.



PEN H3345P2B  
FILE H3345P4B

PAT. H3345P1B H3021P  
(3) NOTCH HOLLOW'S. CELLULOID TIP.



PEN H3345P2B  
FILE H3345P4B

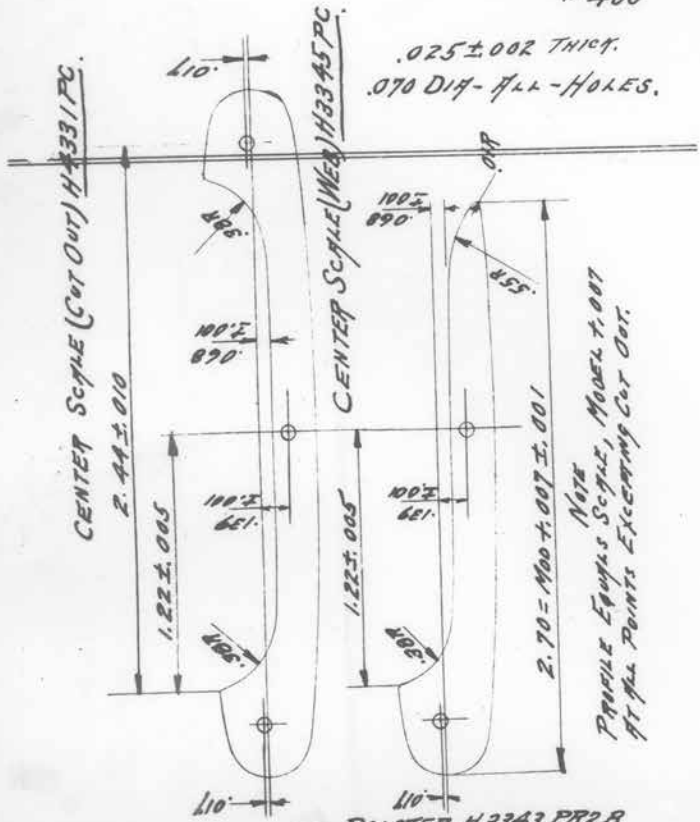
PAT. H3345P1B H3022P.  
(3) NOTCH HOLLOW'S. CELLULOID. SHYDOW.



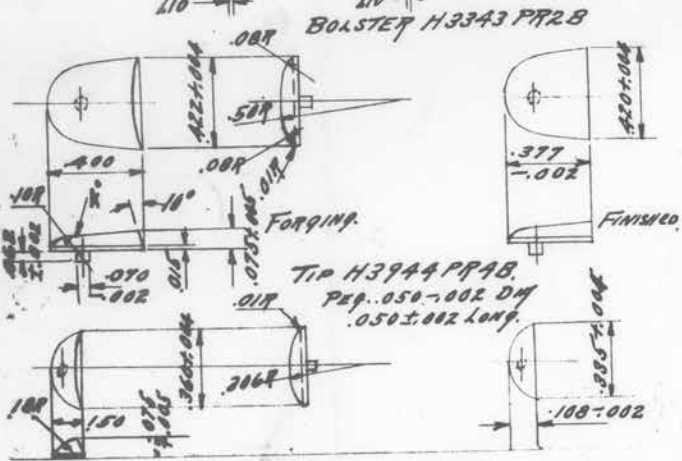
SPRING H3345P1S. USED IN ALL KNIVES.

# 400

.025 ± .002 THICK.  
.070 DIA - ALL - HOLES.



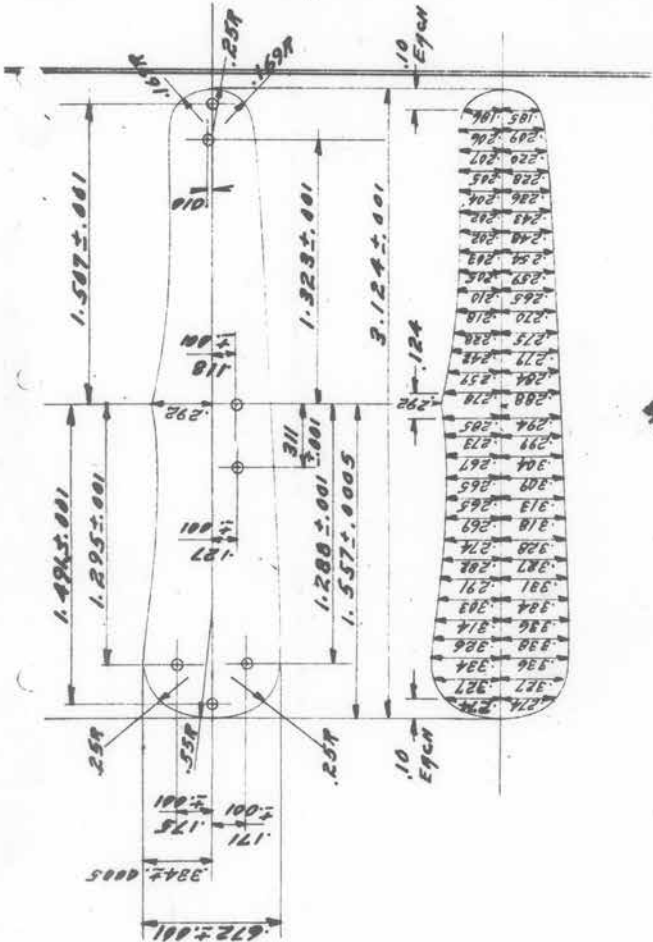
NOTE  
PROFILE EQUALS SCALE, MODEL T.007  
AT ALL POINTS EXCEPTING CUT OUT.



57-58

SCALE-H4920PR18  
N. SILVER.

# 470

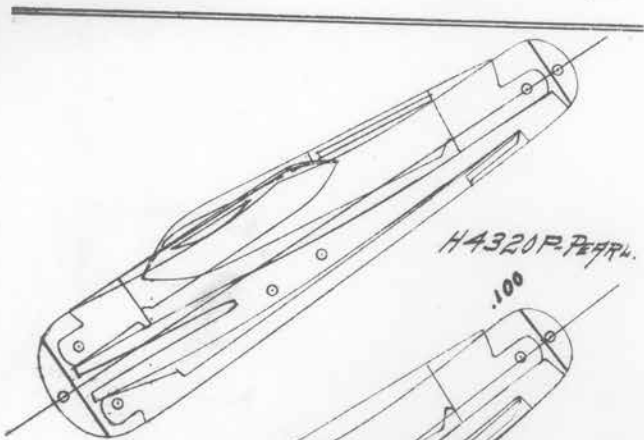


470

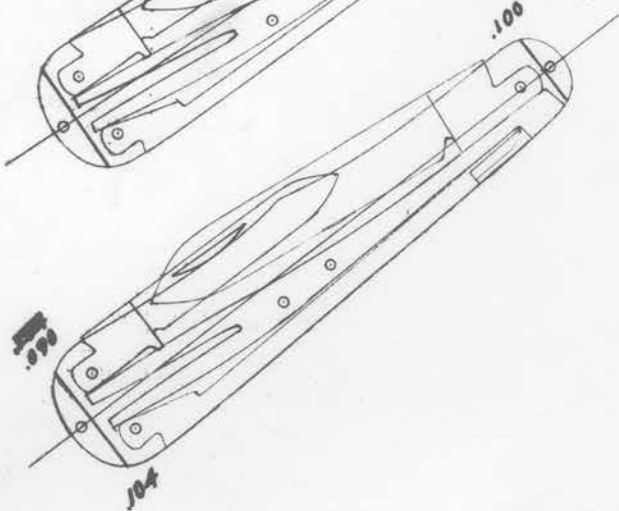
59-00



H4920P-STAG.



H4320P-PEARL.



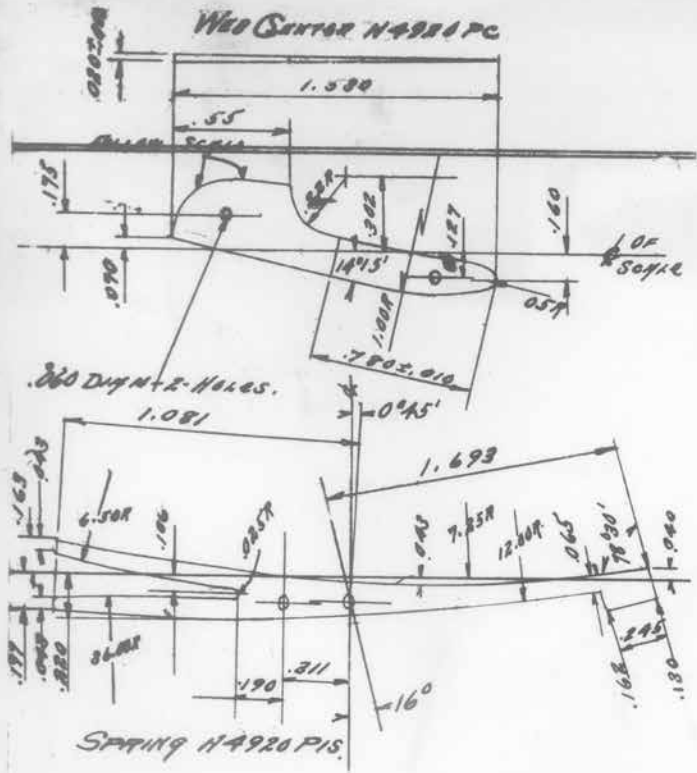
LARGE TIP. .158 Long. Forge. .120 Long FINISH  
.627 Wide " .582 Wide "  
.075 THICK " .075 THICK " .20890  
.050 DIA H - Pq - .062 Long.

SMALL TIP. .150 Long - Forge. .110 Long FINISH.  
.481 Wide " .380 Wide "  
.075 THICK " .075 THICK " .20890

NICKEL SILVER TIPS.

59-60

WEO CENTER H4980 PC

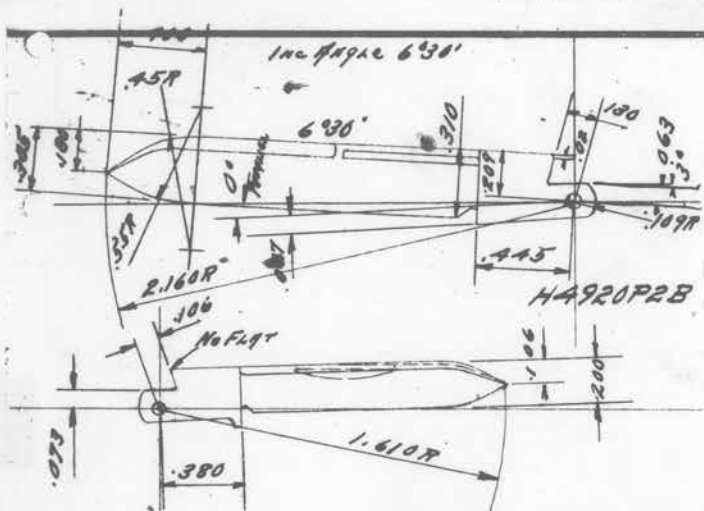


61 - 62

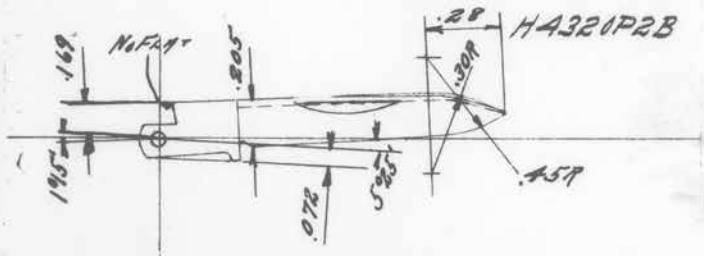
BLADES - FW SIZE  
HOLES - .0605 - .062 DWN.

# 470

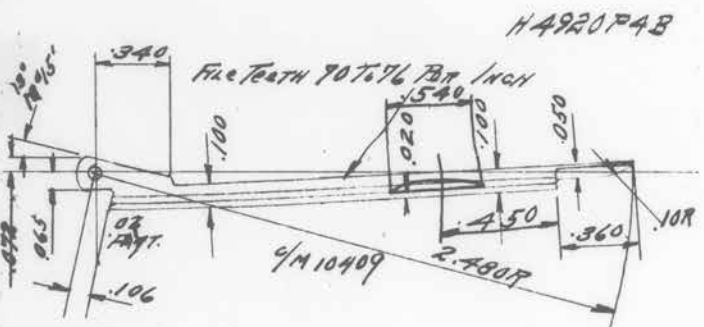
H4920P1B



H4920P2B



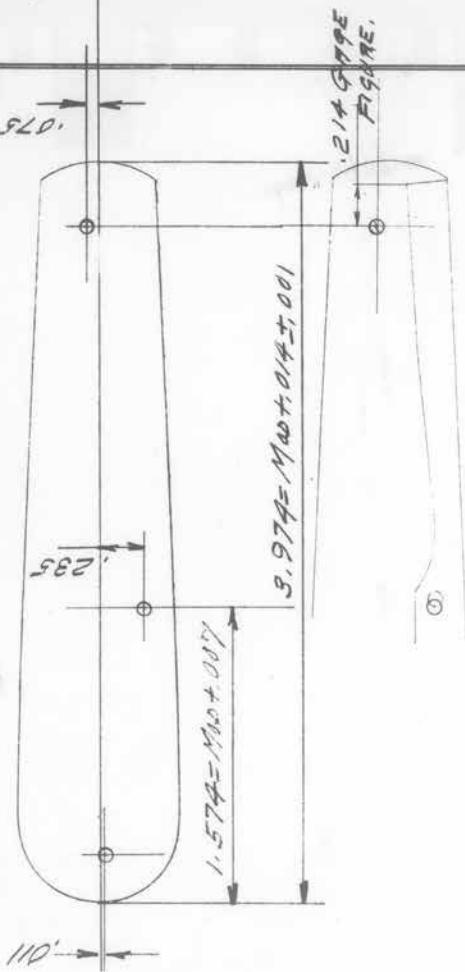
H4320P2B



H4920P4B

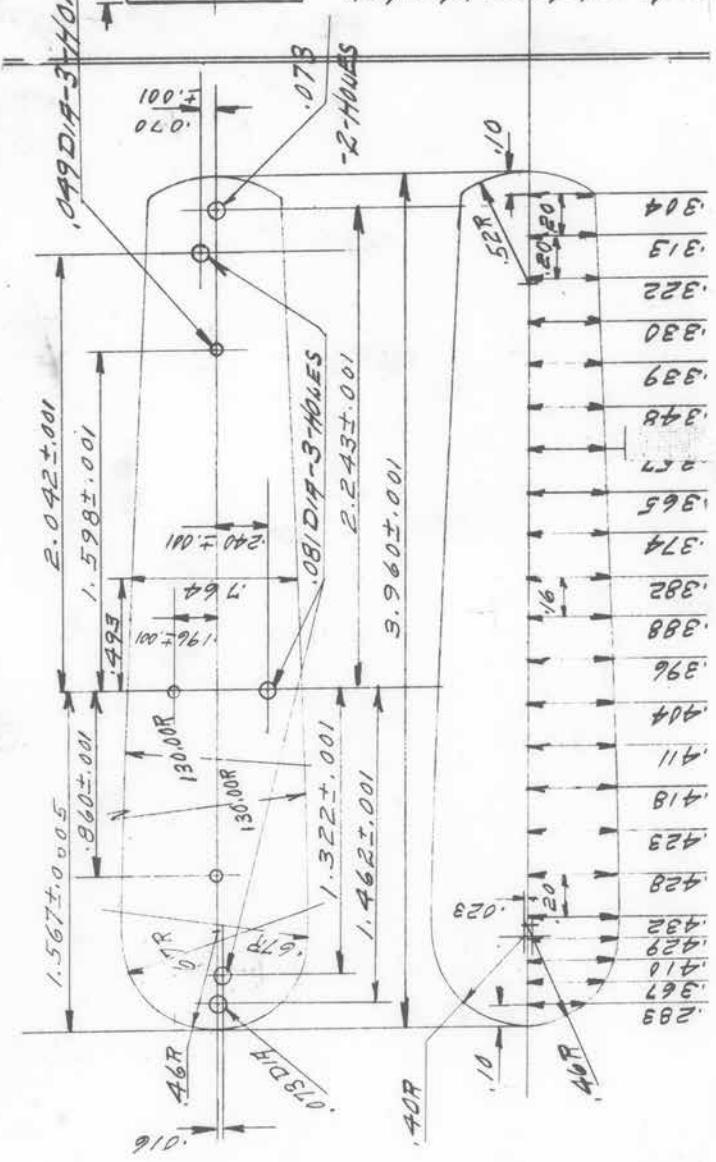
FULL CENTER  
SCALE H26/16PC

NOTE: PROFILE EQUVS SCALE, MOD  $\pm .007$  AT ALL POINTS



63 - 64

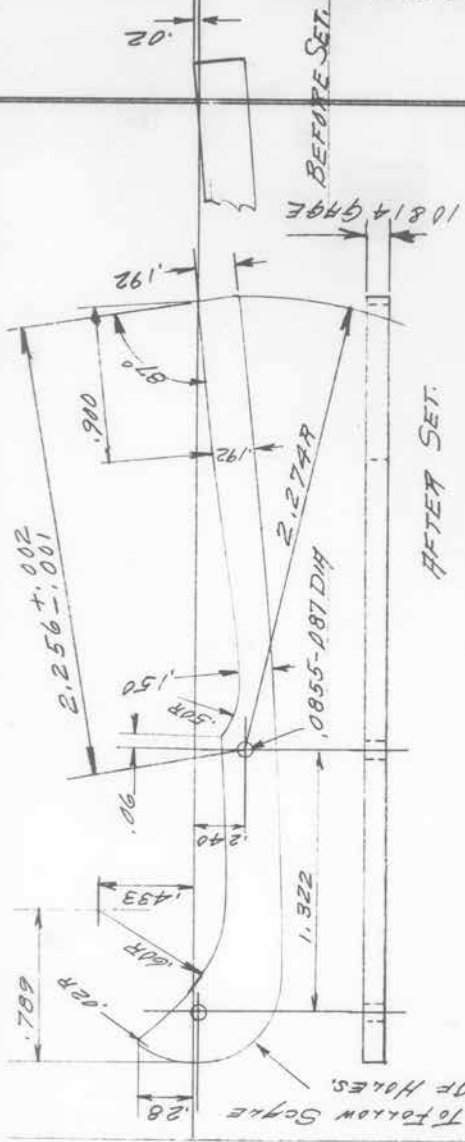
SCALE H2616PR1B #2080  
 PATTERN.  
 REGULAR STRAIGHT JACK.



- .314
- .315
- .322
- .330
- .339
- .348
- .357
- .365
- .374
- .382
- .388
- .396
- .404
- .411
- .418
- .423
- .428
- .432
- .429
- .416
- .367
- .283

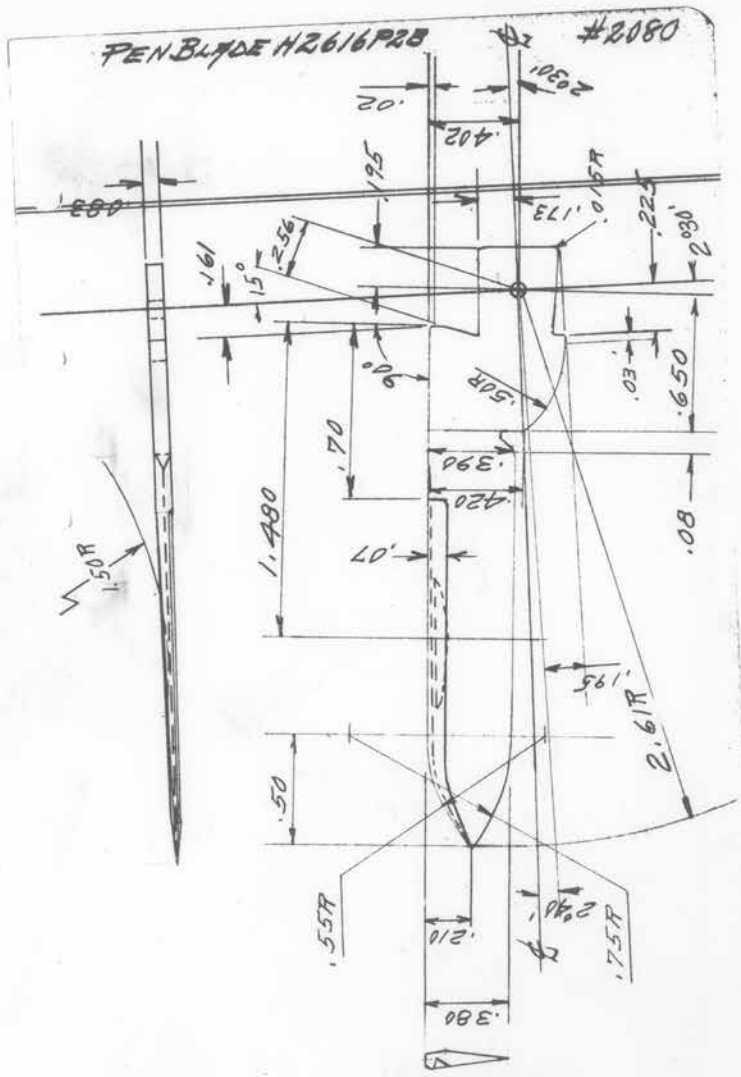
63 - 64

#2080 - POCKET - SPRING H2616 P15 - .134  
 PEY " " H2616 P25 - .083



OUTLINE TO FOLLOW SCRAPE  
 BACK OF HOLES.

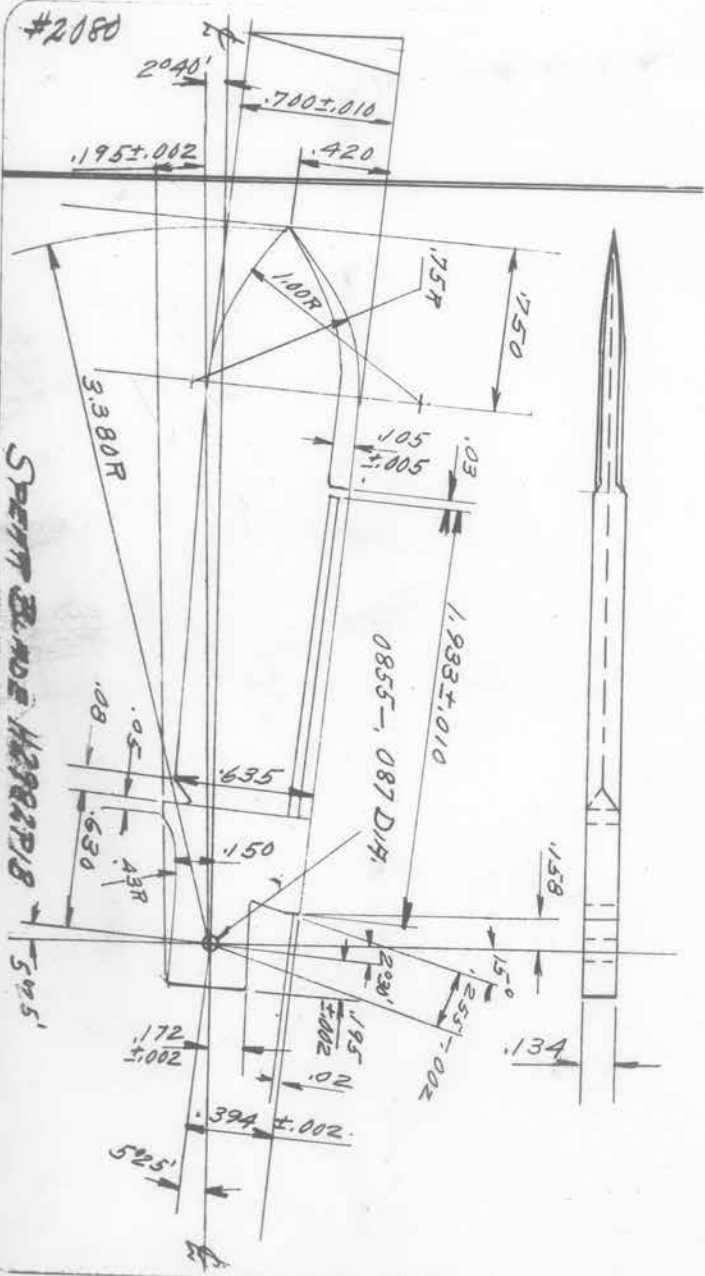
79-59



	BLADES. - OPEN ANG.	CLOSED ANG.	INC. ANG.
SPEAR.	50°10'	50°25'	80°5'
CNIP.	30°40'	80°10'	100°50'
PEN.	10°40'	20°30'	50°10'

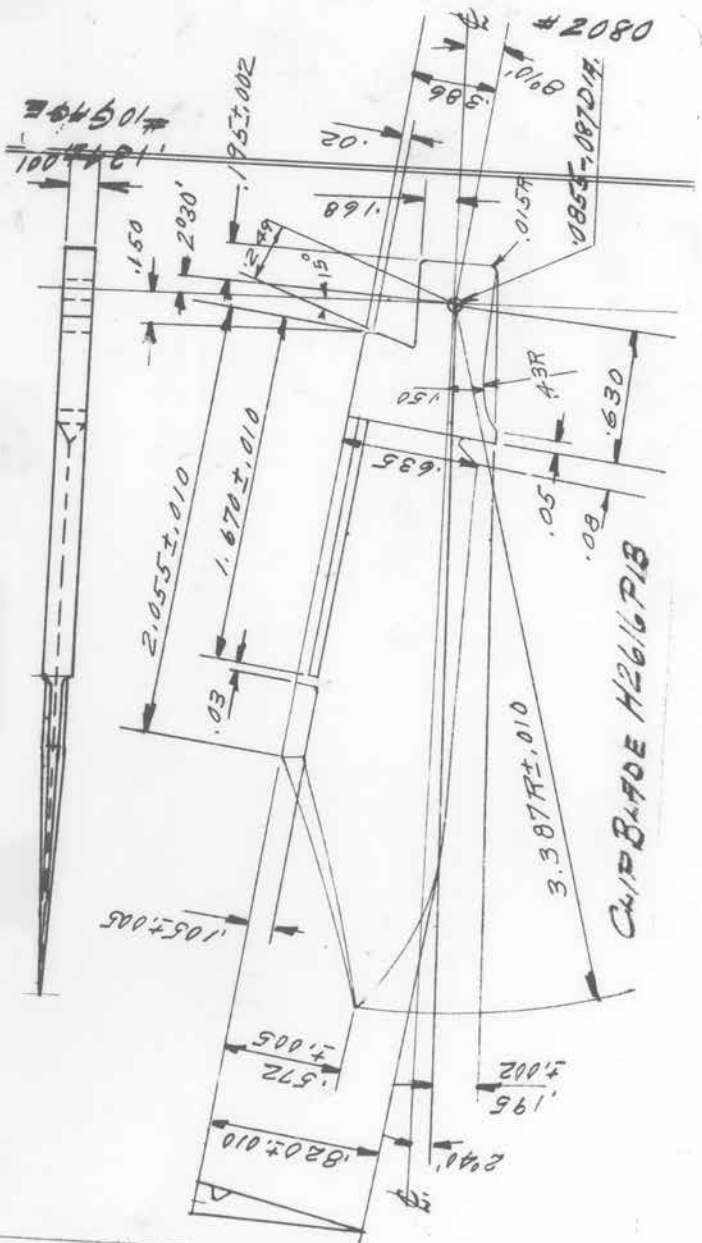
65-66

#2080



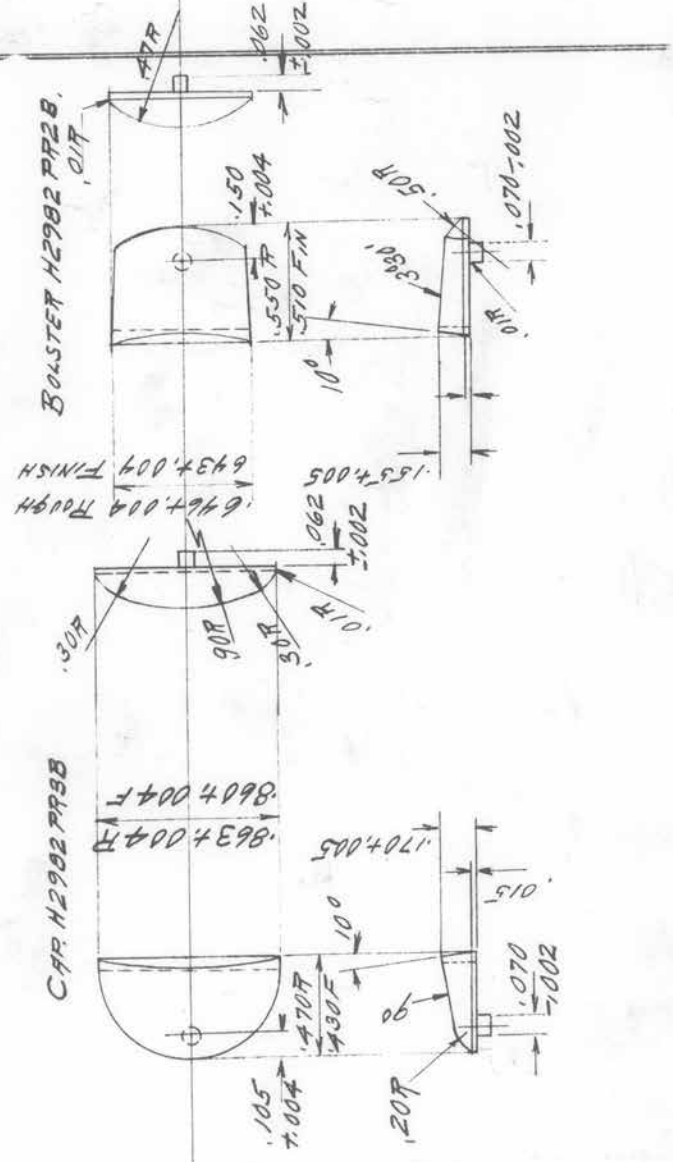
67-68





67-68

WINCHESTER POCKET KNIFE, #2080

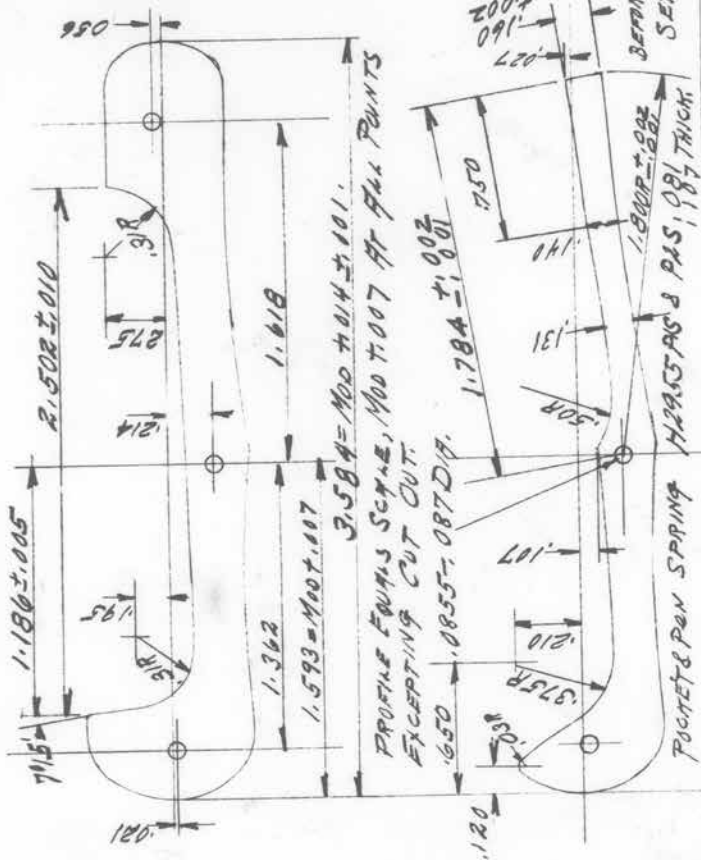


69-70



CENTER SCALE  
H2955 PC.

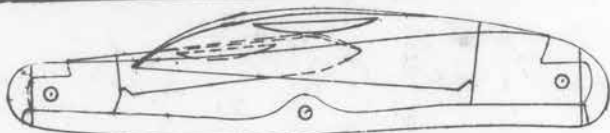
#2120



73-74

#2170

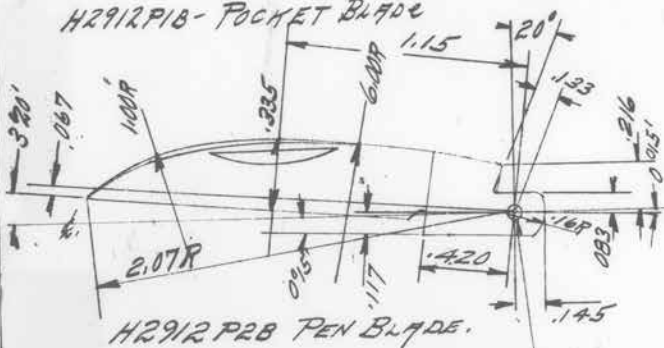
STAG H2912P, PEARL H2312P. With TIPS.  
CELLULOID H2081P - SHADOW.



COVERS - STAG & PEARL, .075 ± .010 THICK, 2.716 LONG.

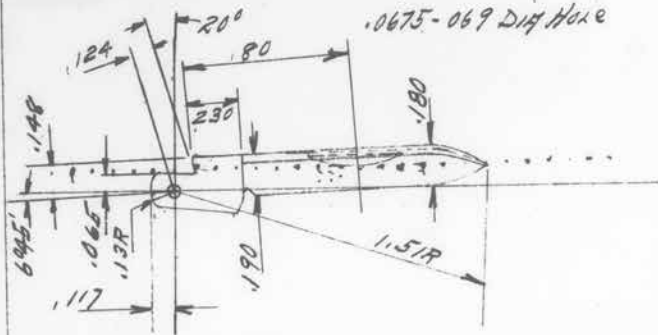
COVERS - CELLULOID .075 ± .010 THICK, 2.898 LONG.

H2912P1B - POCKET BLADE



H2912P2B PEN BLADE.

.0675 - .069 DIA HOLE



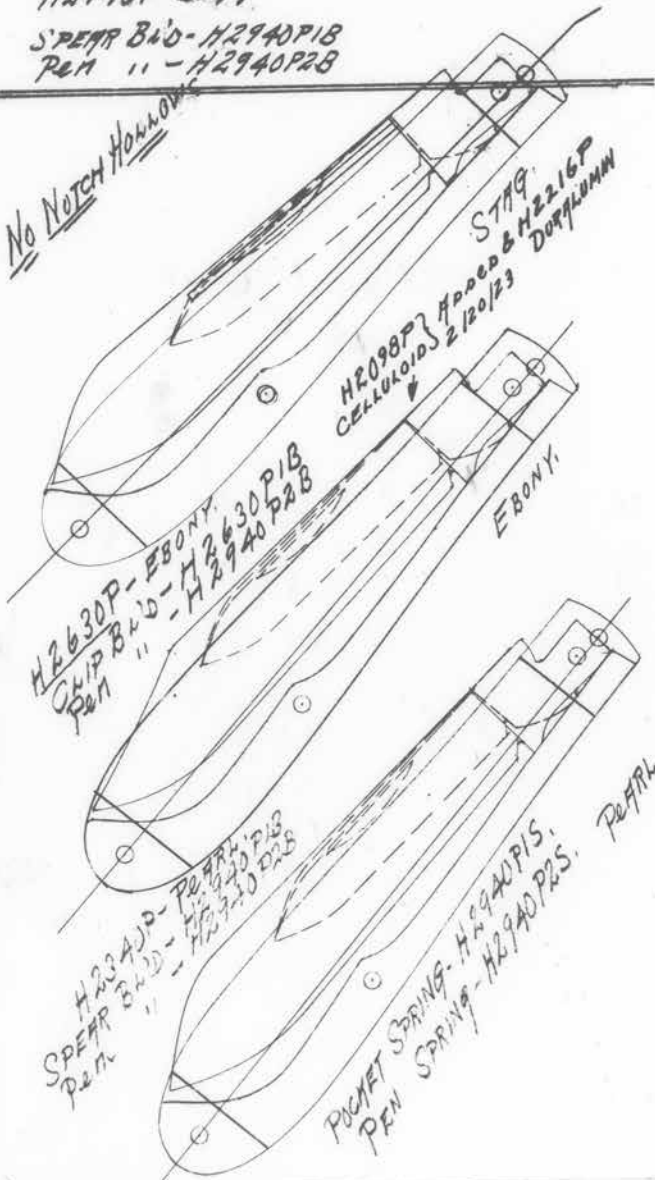
H2987P-6779.

H2940P-STAG.

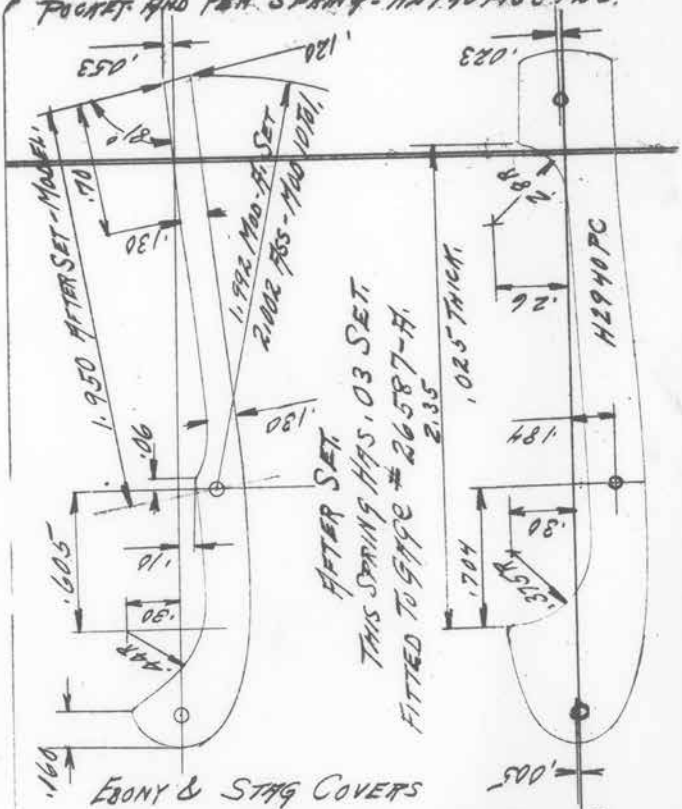
S'PEAR BLD - H2940P1B

PEN " - H2940P2B

No Notch Hollow



POCKET AND PEN SPRING - H2940 P15 & P25.

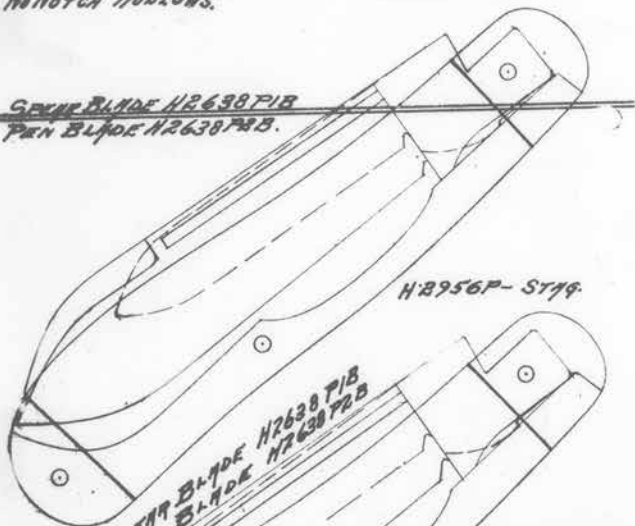


EBONY & STAG COVERS  
 .110 THICK, 2.632 LONG & .684 WIDE - FIN.  
 BOLSTER .384 LONG FIN, CAP. 329 LONG, FIN.  
 FEATH COVERS.  
 .075 THICK, 2.602 LONG, & .684 WIDE - FIN.  
 BOLSTER, 399 LONG, FIN, CAP. 344 LONG FIN.

No Notch Hollows.

H2638P- EBONY

~~SPRING BLADE H2638P1B  
PEN BLADE H2638P2B.~~

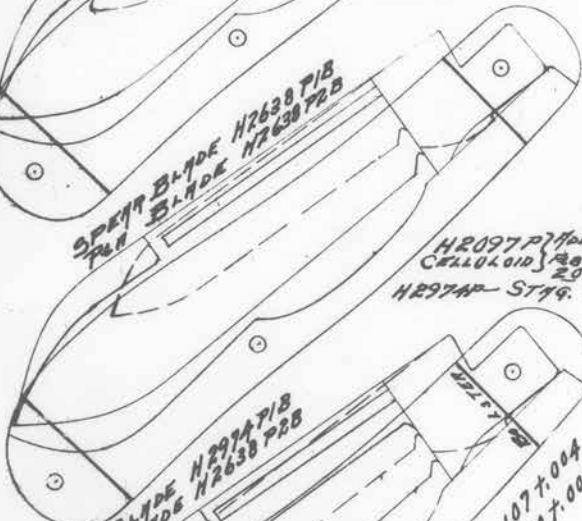


H2956P- ST19.

~~SPRING BLADE H2638P1B  
PEN BLADE H2638P2B~~

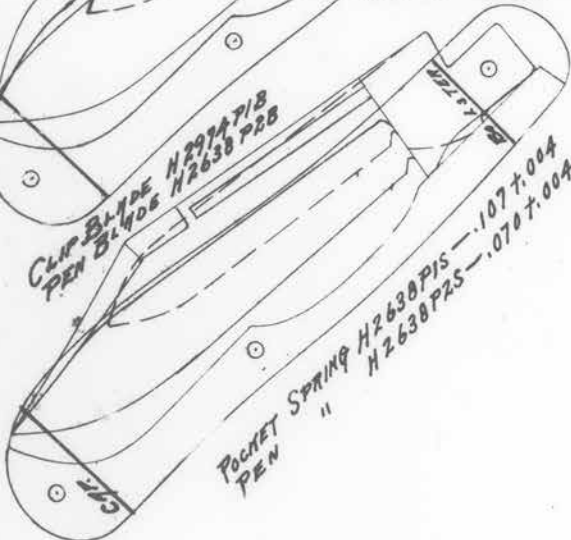
H2097P <sup>Added</sup>  
CELLULOID }  
20-23

H2974P- ST19.



~~CLIP BLADE H2974P1B  
PEN BLADE H2638P2B~~

H2177P



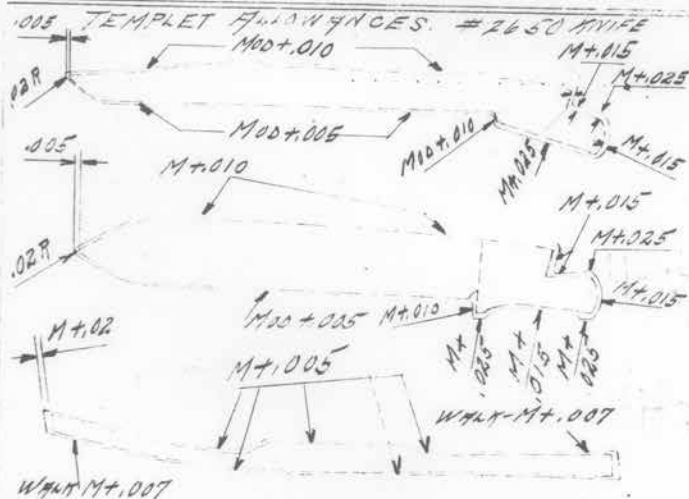
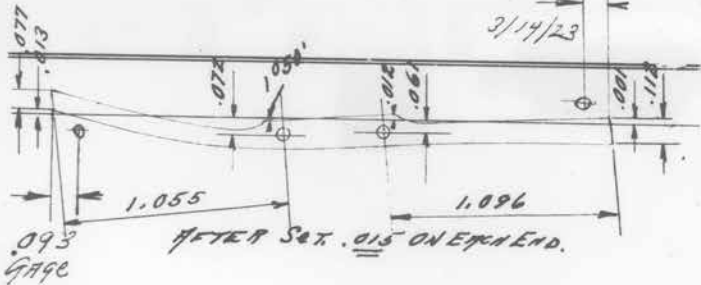
POCKET SPRING H2638P1S - .1077.004  
" H2638P2S - .0707.004



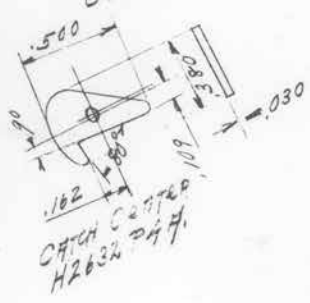
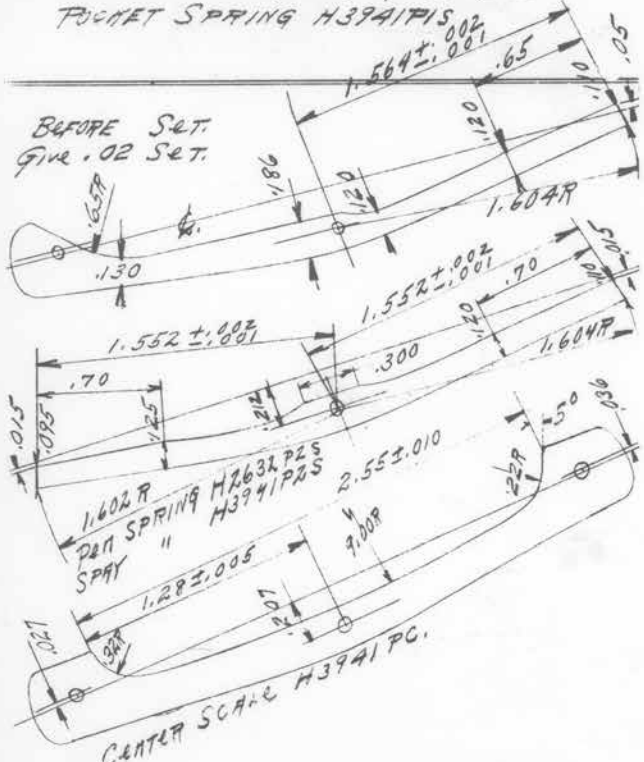


SPRING H2910 PLS ASS. SPRING  
GAGE FIG.  
113

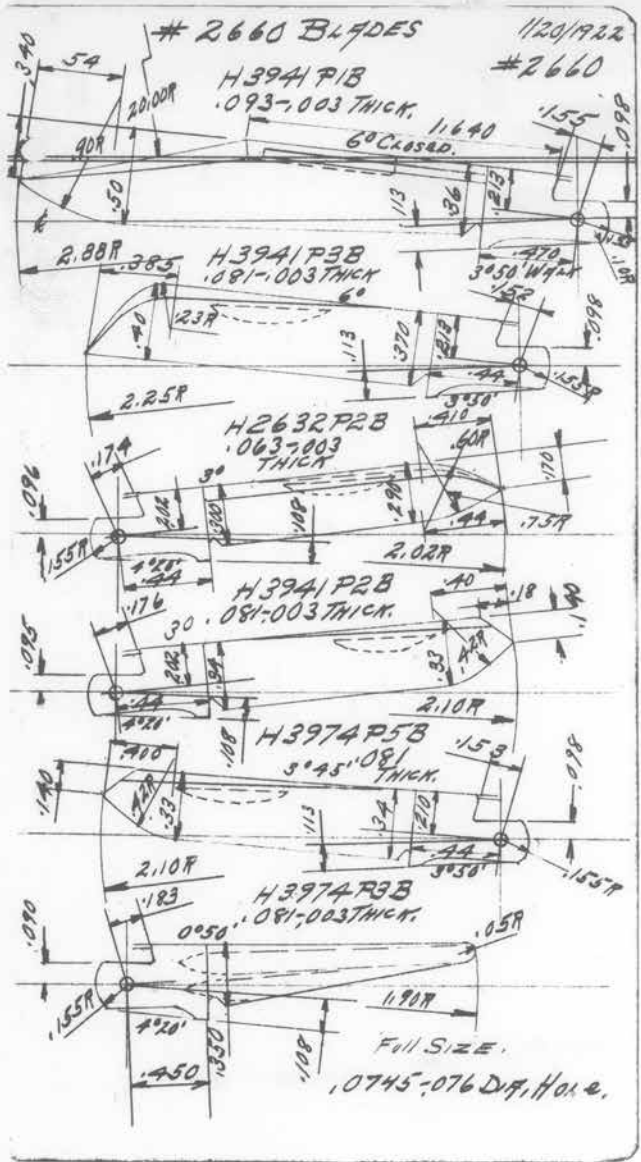
3/14/23



SPRING GAUGE # 27805-H- DOUBLE END  
 " " # 27787-H- SINGLE "  
 POCKET SPRING H3941PIS

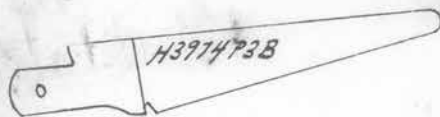
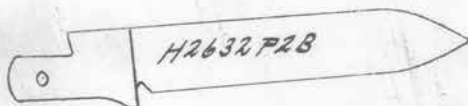
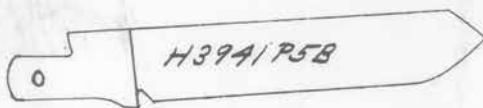
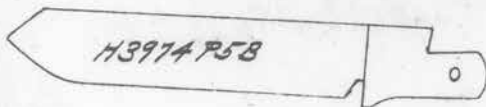
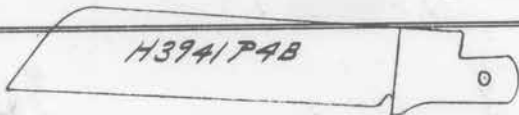
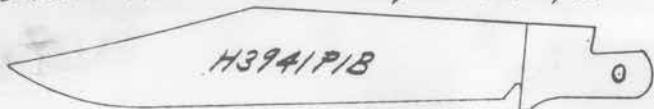


87-88



89-90

OUTLINE FROM MODERN BLADES 12/6/22

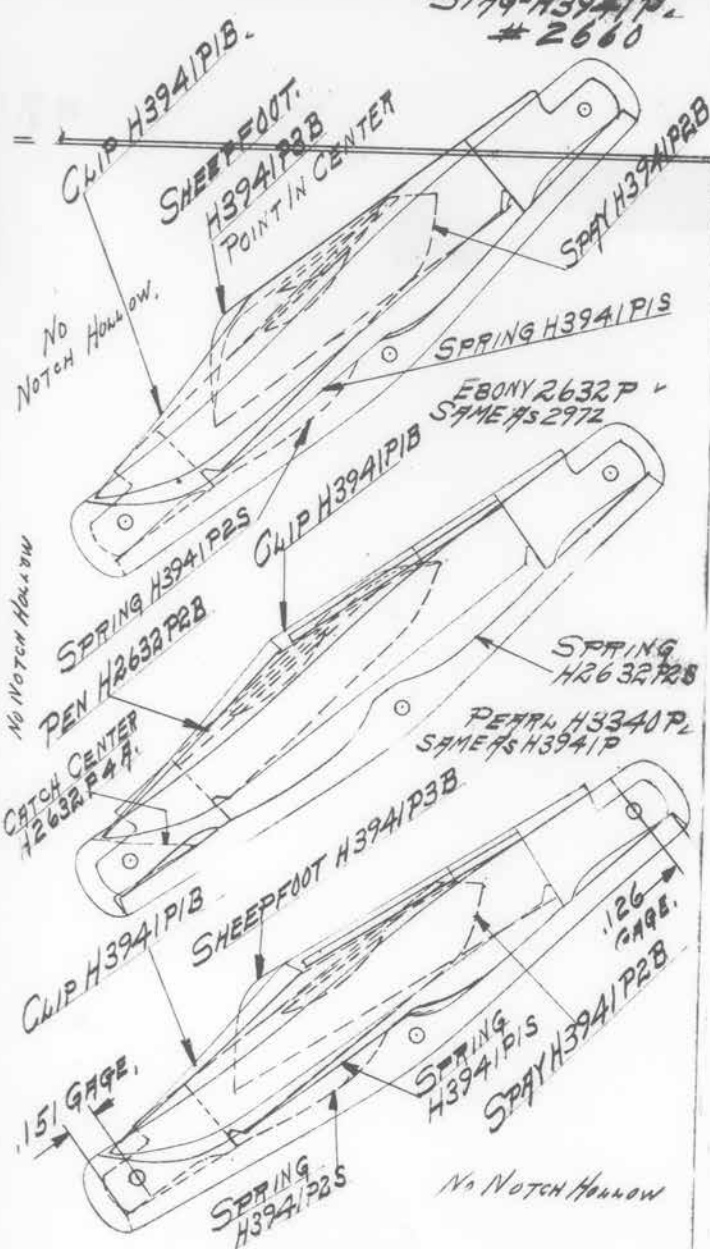


BLADES MEASURED 12/4/22 BY-P

	OPEN ANGLE	CLOSED ANGLE	INCLUDED ANGLE
CLIP-3941	5°30'	60'	90°45'
PEN-2632	8°5'	30'	70°20'
S'FOOT-3941	6°30'	60'	90°50'
SPRY H3941	8°5'	30'	70°20'
SPRY H3974	8°10'	30°45'	70°35'
PUNCH 3974P3B	8°00'	0°50'	50°10'

89-90

STAG-H394IP.  
# 2660



91-92A

No Notch Hollow.

STAG H2972 P.

CLIP H394/P1B

PEN H2632 P2B

SPRING H2632 P2S

CATCH CENTER H2632 P4 F.

STAG 3974 P

SPRAY H3974 P5B

CLIP H394/P1B

PUNCH H3974 P3B

NOTCH HOLLOW

CELLULOID H3012 P

SPRAY H3974 P5B

CLIP H394/P1B

SPRING H394/P1S  
SPRING H394/P2S

NOTCH HOLLOW.

PUNCH H3974 P3B

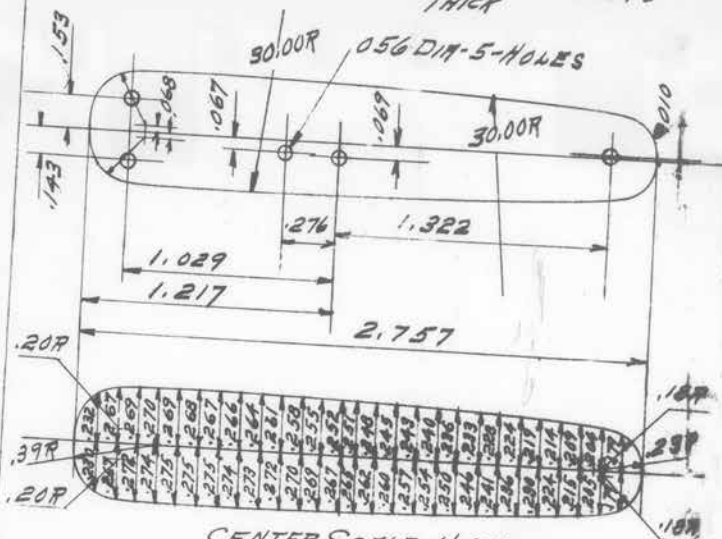
SPRING H394/P1S

SPRING H394/P2S

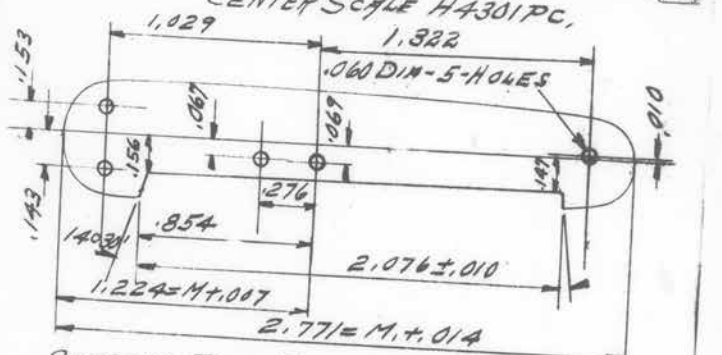
H2989 P. GENUINE STAG.  
STAINLESS STEEL.  
DOUBLE END SPRING.  
CLIP & SPRAY BLADES.

91-92<sup>1</sup>

SCALE, H3901 PRIB, 025 #3290 THICK



CENTER SCALE H4301 PC,



SCISSORS FIXED JAW H4301 P11 B



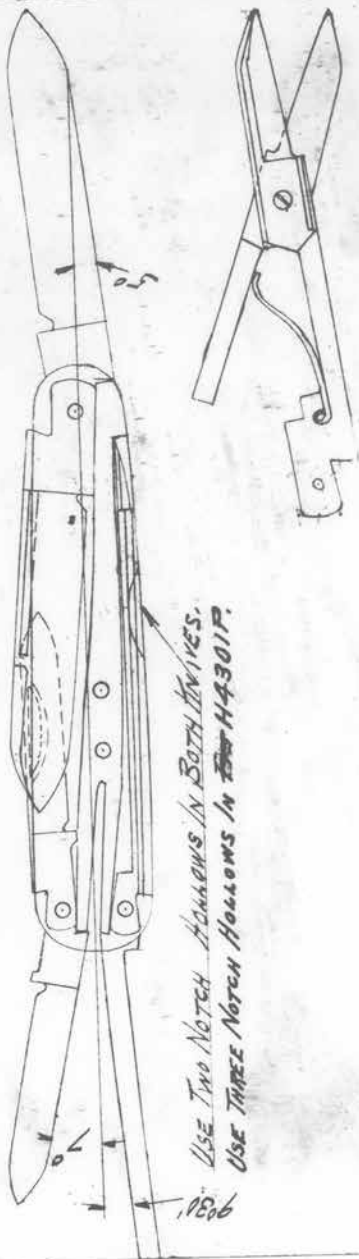
STAG H3901P, POCKET, PENCIL, PEN & NAIL FILE - (NARROW)  
 PEARL H3301P  
 PEARL H4301P " " PICK (WIRE) & SCISSORS.

93-94



Full Size Sketch

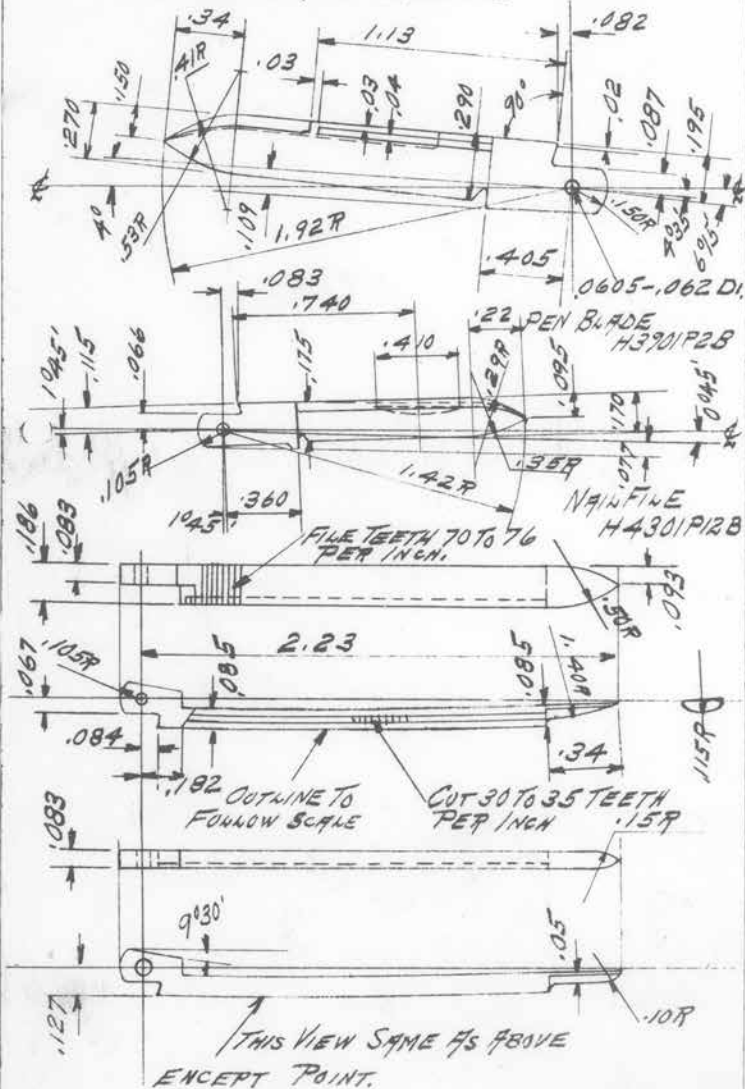
{ H3901P - STMP.  
H3301P - DEPPL.



USE TWO NOTCH HOLLOW IN BOTH BLADES.  
USE THREE NOTCH HOLLOW IN ~~THE~~ H3301P.

93-94

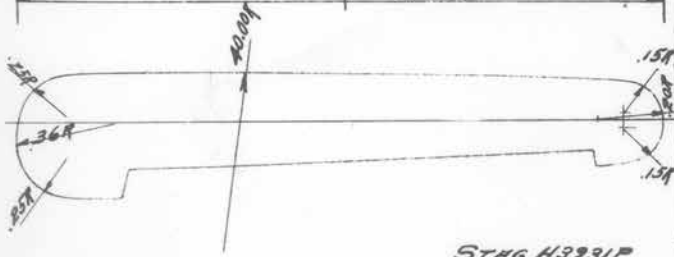
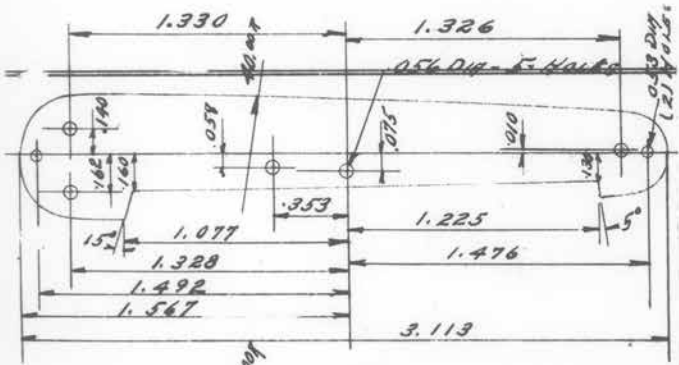
POCKET BLADE - H3901PIB #3290



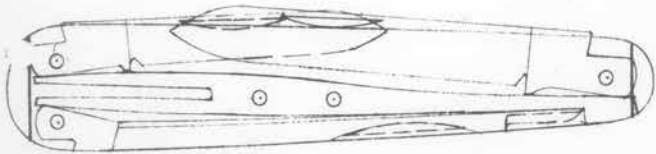
97-98 ✓

SCALE - H3931 P. 18.

#3310

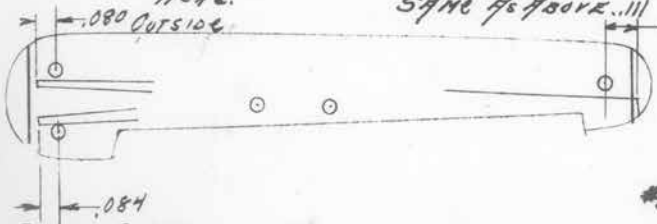


ST49 H3931P



NOTCH HOLLOW HERE.

PERM H3331P. SAME AS ABOVE...!!!



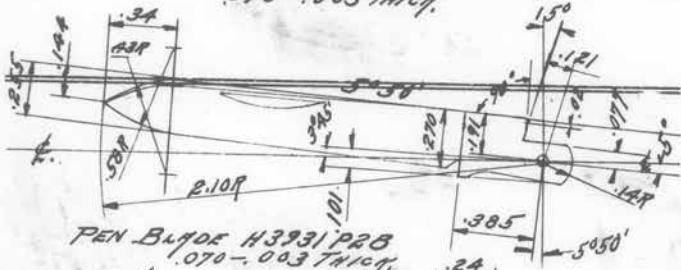
OUTSIDE CORNER

GAGE FIGURES, FROM ASSEMBLY SPRING 2-7-23.

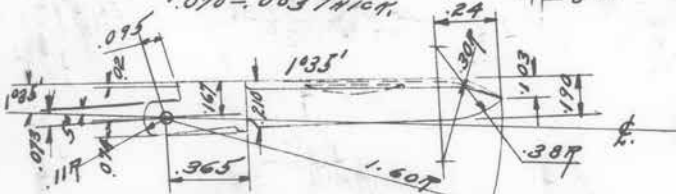
#35

97-98 ✓

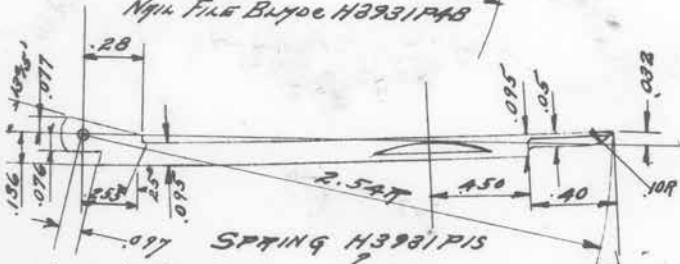
POCKET BLADE H3931P1B  
 .070-.003 THICK.



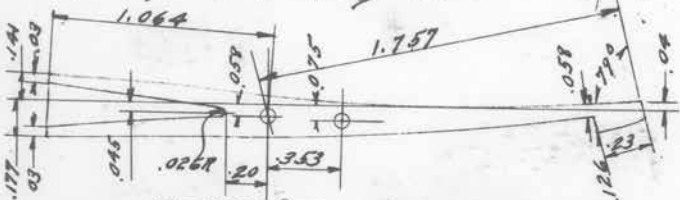
PEN BLADE H3931P2B  
 .070-.003 THICK.



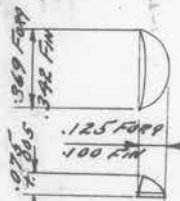
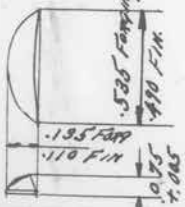
FILE BLADE H3931P4B



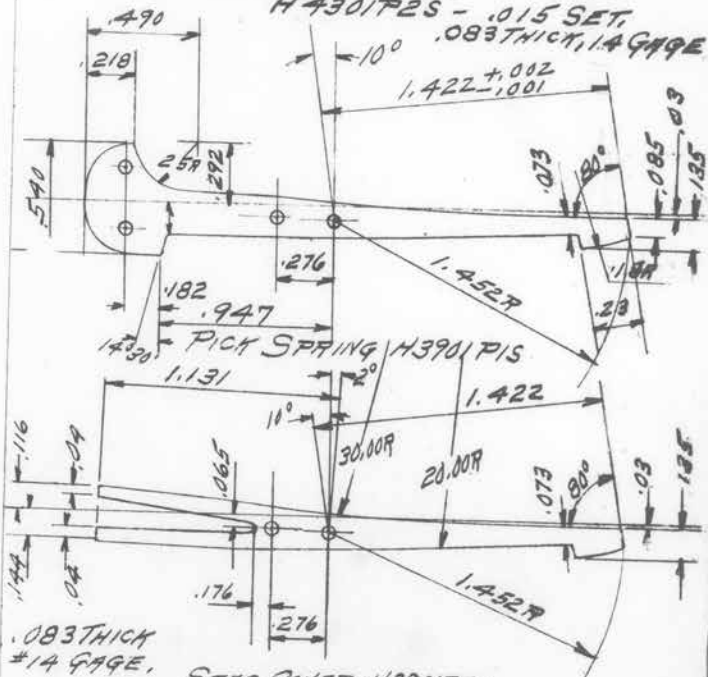
SPRING H3931P5B



BEFORE SET - GIVE .015 SET (3) POINTS  
 TIP (LARGE) H3931P9B TIP (SMALL) H3931P4B

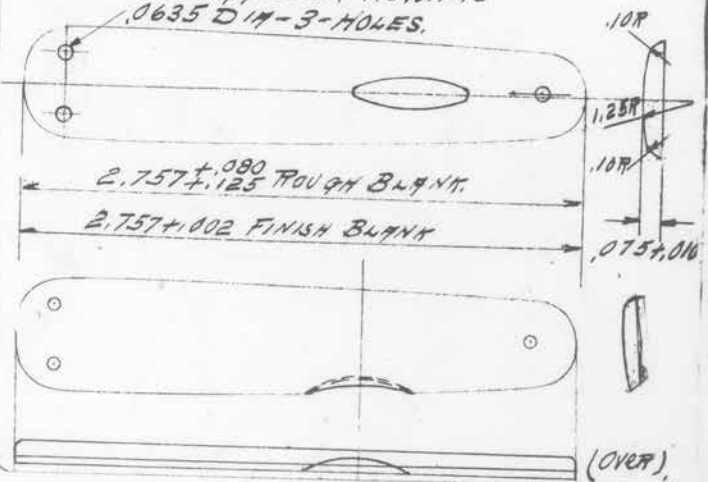


SCISSORS SPRING #3290  
 H430/P2S - .015 SET,  
 .083 THICK, #14 GAUGE



PICK SPRING H390/P1S

STAG COVER H390/P3C  
 .0635 DIA - 3-HOLES.



(OVER)

GA90 FIGURES - JAN-31-1943

EXP. SHOP

$.1005$  OUTSIDE CORNER  $.115$

ASSEMBLY SPRING

$.1015$  OUTSIDE CORNER

$.0995$  " " "

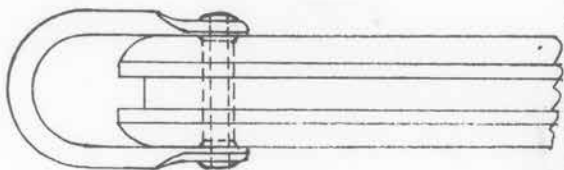
FORN  $.115$   
SINGL  $.116$

MODEL SPRING  
FORN & SINGL END.

$.1085$  OUTSIDE CORNER

99-100

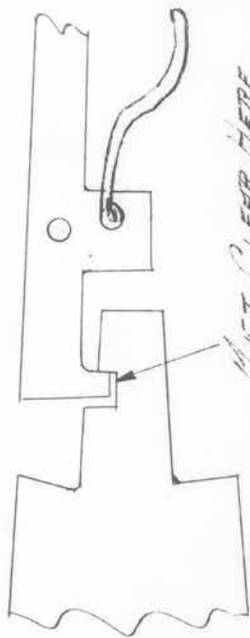
#400 PATTERN.  
METHOD SHOWING SHACKLE RIVET IN  
HOLLOW BLADE RIVET.  
PEARL SHADOW KNIFE  
H2336P & H3352P.



FEB-20-1923

DOUBLE SIZE.

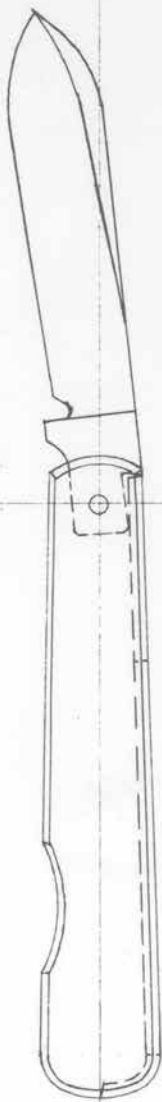
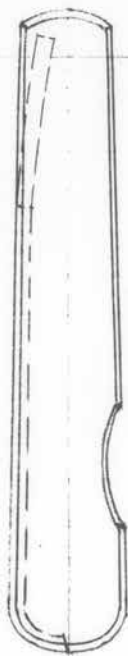
WINCHESTER TOOL MFG EXACTIFICANS  
OUTFIT



MUST CLEAR HERE  
DIP ONE FINGER POINT  
AS SHOWN.

103-104

JACK KNIFE

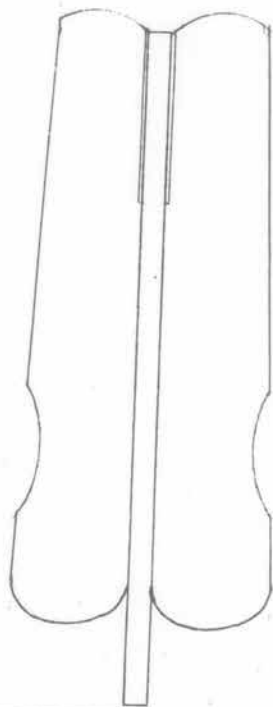


1920

105-106



HANDLE & SPRING BLANK.



105-106

BOLSTER (PEN END) H3954 PR3B.

FORGING LENGTH. .482 LONG. .468 WIDE, & .110 THICK.

FINISHED .450 " .465 " & .110 THICK.

3°30' ON TOP. WITH .177 ON END

---

BOLSTER (POCKET END) H3954 PR2B.

FORGING. .535 LONG, .571 WIDE, & .140 THICK.

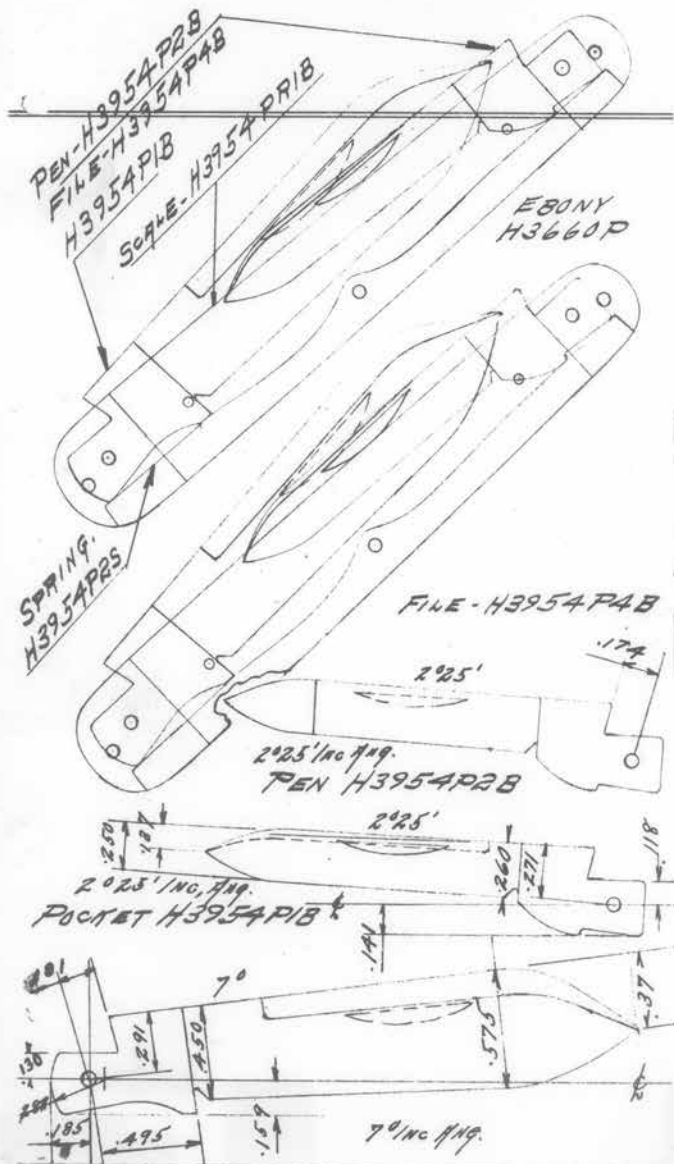
FINISHED. .498 " .570 " & .140 THICK.

3° ON TOP, WITH .227, ON END.

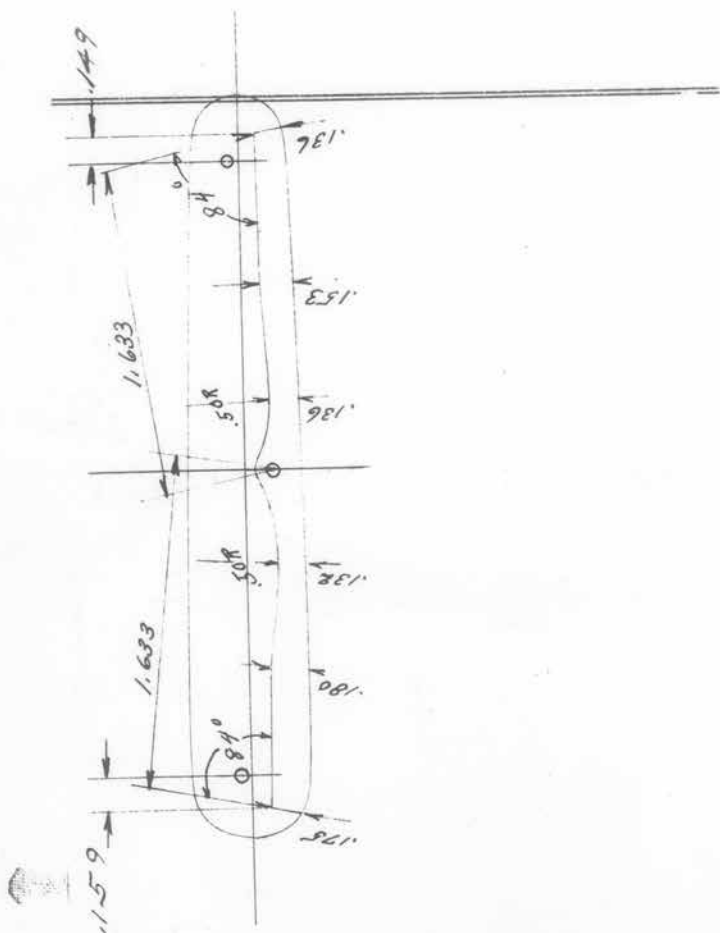
109-110

#3080

ST#9. H3954P



109-110



OPEN ANGLE C. OF BLADES, Closed, Angle

PAT. 6°

Per. 9°10'

Fixe. 9°10'

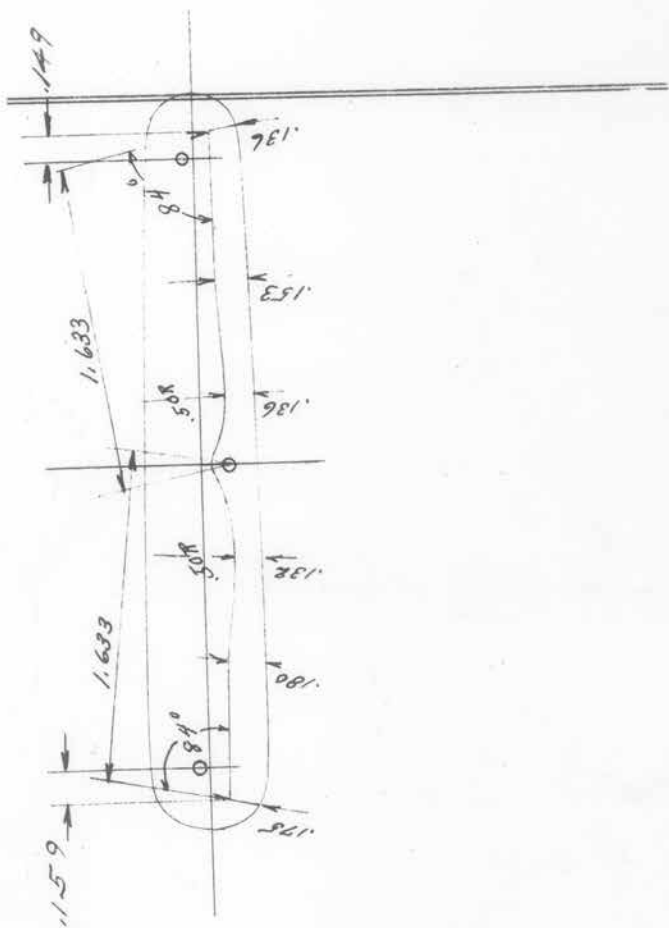
70

2°25'

2°25'

1019-1922

111-112



OPEN FIGURE OF BLADES, CLOSED, FIGURE

Pitch, 6°

70

Pitch, 90/10

2025'

Fixed, 90/10

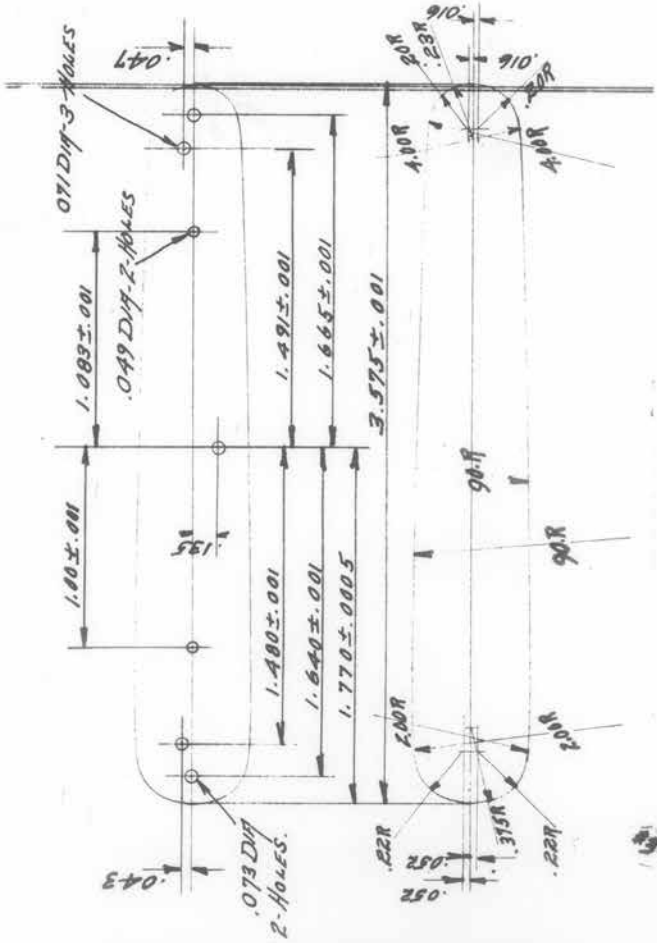
2025'

1019-1922

111-112

SCALE H3954 P#18.

#3080



CENTER SCALE .065 THICK TO .005

111-112

# 1916

1916							1916								
	Sun.	Mon.	Tue.	Wed.	Thu.	Fri.	Sat.		Sun.	Mon.	Tue.	Wed.	Thu.	Fri.	Sat.
Jan	..	1	2	3	4	5	6	7	8	9	10	11	12	13	14
	2	3	4	5	6	7	8	9	10	11	12	13	14	15	16
	9	10	11	12	13	14	15	16	17	18	19	20	21	22	23
	16	17	18	19	20	21	22	23	24	25	26	27	28	29	30
	23	24	25	26	27	28	29	30	31	..	..	..	..	..	..
Feb	..	1	2	3	4	5	6	7	8	9	10	11	12	13	14
	6	7	8	9	10	11	12	13	14	15	16	17	18	19	20
	13	14	15	16	17	18	19	20	21	22	23	24	25	26	27
	20	21	22	23	24	25	26	27	28	29	..	..	..	..	..
Mar	..	1	2	3	4	5	6	7	8	9	10	11	12	13	14
	5	6	7	8	9	10	11	12	13	14	15	16	17	18	19
	12	13	14	15	16	17	18	19	20	21	22	23	24	25	26
	19	20	21	22	23	24	25	26	27	28	29	30	31	..	..
Apr	..	1	2	3	4	5	6	7	8	9	10	11	12	13	14
	2	3	4	5	6	7	8	9	10	11	12	13	14	15	16
	9	10	11	12	13	14	15	16	17	18	19	20	21	22	23
	16	17	18	19	20	21	22	23	24	25	26	27	28	29	30
	23	24	25	26	27	28	29	30	..	..	..	..	..	..	..
May	..	1	2	3	4	5	6	7	8	9	10	11	12	13	14
	7	8	9	10	11	12	13	14	15	16	17	18	19	20	21
	14	15	16	17	18	19	20	21	22	23	24	25	26	27	28
	21	22	23	24	25	26	27	28	29	30	31	..	..	..	..
	28	29	30	31	..	..	..	..	..	..	..	..	..	..	..
Jun	..	1	2	3	4	5	6	7	8	9	10	11	12	13	14
	4	5	6	7	8	9	10	11	12	13	14	15	16	17	18
	11	12	13	14	15	16	17	18	19	20	21	22	23	24	25
	18	19	20	21	22	23	24	25	26	27	28	29	30	..	..
	25	26	27	28	29	30	..	..	..	..	..	..	..	..	..
Jul	..	1	2	3	4	5	6	7	8	9	10	11	12	13	14
	2	3	4	5	6	7	8	9	10	11	12	13	14	15	16
	9	10	11	12	13	14	15	16	17	18	19	20	21	22	23
	16	17	18	19	20	21	22	23	24	25	26	27	28	29	30
	23	24	25	26	27	28	29	30	31	..	..	..	..	..	..
Aug	..	1	2	3	4	5	6	7	8	9	10	11	12	13	14
	6	7	8	9	10	11	12	13	14	15	16	17	18	19	20
	13	14	15	16	17	18	19	20	21	22	23	24	25	26	27
	20	21	22	23	24	25	26	27	28	29	30	31	..	..	..
Sep	..	1	2	3	4	5	6	7	8	9	10	11	12	13	14
	3	4	5	6	7	8	9	10	11	12	13	14	15	16	17
	10	11	12	13	14	15	16	17	18	19	20	21	22	23	24
	17	18	19	20	21	22	23	24	25	26	27	28	29	30	31
	24	25	26	27	28	29	30	..	..	..	..	..	..	..	..
Oct	..	1	2	3	4	5	6	7	8	9	10	11	12	13	14
	8	9	10	11	12	13	14	15	16	17	18	19	20	21	22
	15	16	17	18	19	20	21	22	23	24	25	26	27	28	29
	22	23	24	25	26	27	28	29	30	31	..	..	..	..	..
	29	30	31	..	..	..	..	..	..	..	..	..	..	..	..
Nov	..	1	2	3	4	5	6	7	8	9	10	11	12	13	14
	5	6	7	8	9	10	11	12	13	14	15	16	17	18	19
	12	13	14	15	16	17	18	19	20	21	22	23	24	25	26
	19	20	21	22	23	24	25	26	27	28	29	30	..	..	..
	26	27	28	29	30	..	..	..	..	..	..	..	..	..	..
Dec	..	1	2	3	4	5	6	7	8	9	10	11	12	13	14
	3	4	5	6	7	8	9	10	11	12	13	14	15	16	17
	10	11	12	13	14	15	16	17	18	19	20	21	22	23	24
	17	18	19	20	21	22	23	24	25	26	27	28	29	30	31
	24	25	26	27	28	29	30	..	..	..	..	..	..	..	..

# 1917

1917							1917								
	Sun.	Mon.	Tue.	Wed.	Thu.	Fri.	Sat.		Sun.	Mon.	Tue.	Wed.	Thu.	Fri.	Sat.
Jan	7	8	9	10	11	12	13	Jul	1	2	3	4	5	6	7
	14	15	16	17	18	19	20		8	9	10	11	12	13	14
	21	22	23	24	25	26	27		15	16	17	18	19	20	21
	28	29	30	31	..	..	..		22	23	24	25	26	27	28
Feb	..	..	..	..	..	1	2	Aug	..	..	1	2	3	4	
	3	4	5	6	7	8	9		5	6	7	8	9	10	11
	10	11	12	13	14	15	16		12	13	14	15	16	17	18
	17	18	19	20	21	22	23		19	20	21	22	23	24	25
	24	25	26	27	28	29	30		26	27	28	29	30	31	..
Mar	..	..	..	..	..	1	2	Sep	..	..	..	..	..	..	1
	3	4	5	6	7	8	9		2	3	4	5	6	7	8
	10	11	12	13	14	15	16		9	10	11	12	13	14	15
	17	18	19	20	21	22	23		16	17	18	19	20	21	22
	24	25	26	27	28	29	30		23	24	25	26	27	28	29
Apr	..	..	..	..	..	..	..	Oct	..	1	2	3	4	5	6
	1	2	3	4	5	6	7		7	8	9	10	11	12	13
	8	9	10	11	12	13	14		14	15	16	17	18	19	20
	15	16	17	18	19	20	21		21	22	23	24	25	26	27
	22	23	24	25	26	27	28		28	29	30	31	..	..	..
May	29	30	..	..	..	..	..	Nov	..	..	..	..	1	2	3
	..	..	1	2	3	4	5		4	5	6	7	8	9	10
	6	7	8	9	10	11	12		11	12	13	14	15	16	17
	13	14	15	16	17	18	19		18	19	20	21	22	23	24
	20	21	22	23	24	25	26		25	26	27	28	29	30	..
	27	28	29	30	31	..	..		..	..	..	..	..	..	1
Jun	..	..	..	..	..	1	2	Dec	2	3	4	5	6	7	8
	3	4	5	6	7	8	9		9	10	11	12	13	14	15
	10	11	12	13	14	15	16		16	17	18	19	20	21	22
	17	18	19	20	21	22	23		23	24	25	26	27	28	29
	24	25	26	27	28	29	30		30	31	..	..	..	..	..



H 1920 P

X 100

Assembly

Parts required for assembly, consists of.

(2) Balster Scale H 1920 P A B E P A B

~~(2) Covers H 1920 P A C B P A C.~~

(1) Pocket Blade H 1920 P I B

(1) Single End Spring H 1920 P I S.

(1) Shield H 1920 P F S

(1) Blade Rivet H 1460 P A .08 lbs. per 100 Rivets.

(1) Handle " " " " " " " "

3) Cover " H 1850 P A .018 " " " "

2) Shield " H 1860 P A .018 " " " "

Blade H 1920 P I B

1 B1 (77A) Re-grind, Wet grinder [Grinder stone (S)  
Lay on side & shoulder. [Sample B<sup>#</sup> 31064  
Cancel.

Grind point of back.

Grind wedge.

Cut wedge to tang end of nail  
mark, both sides.

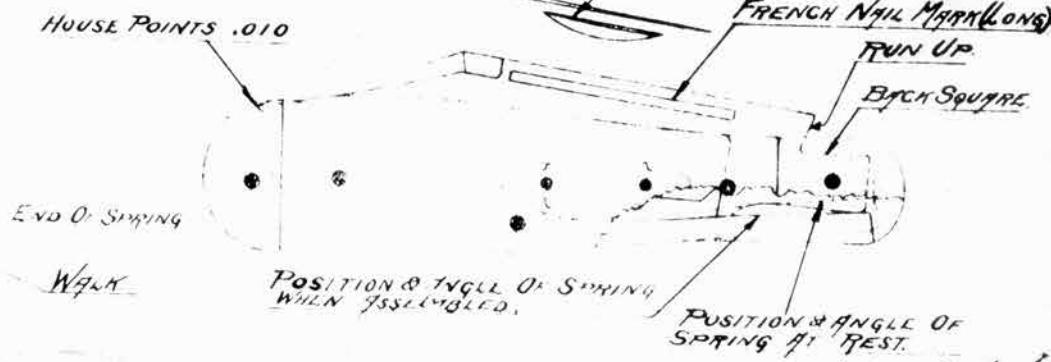
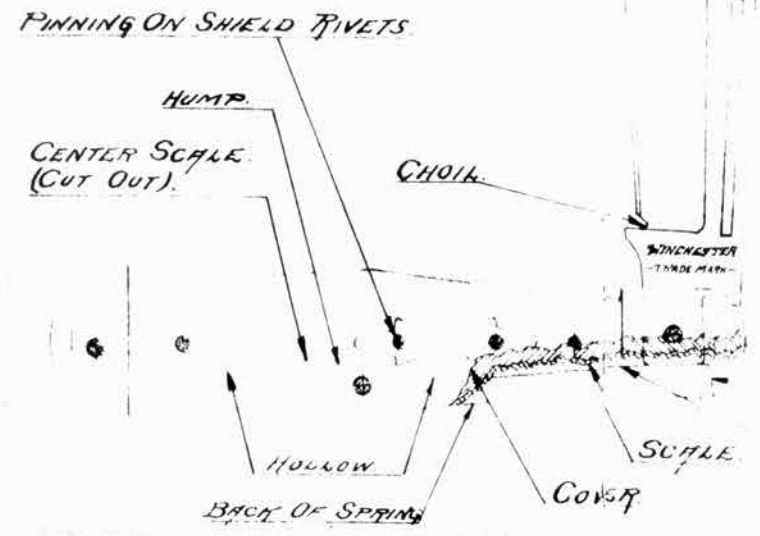
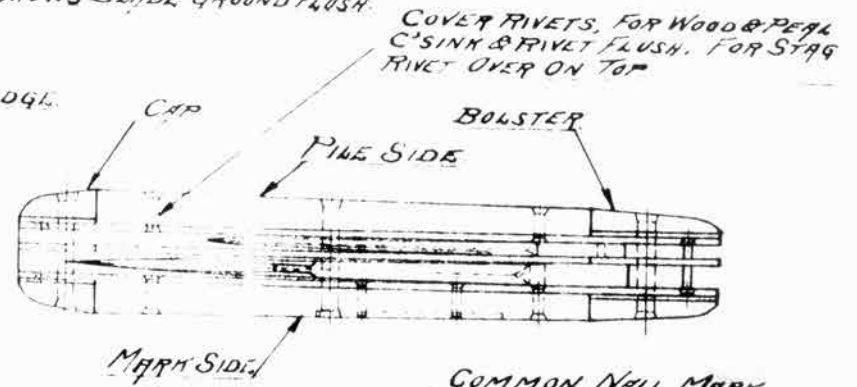
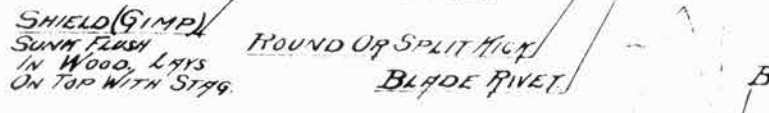
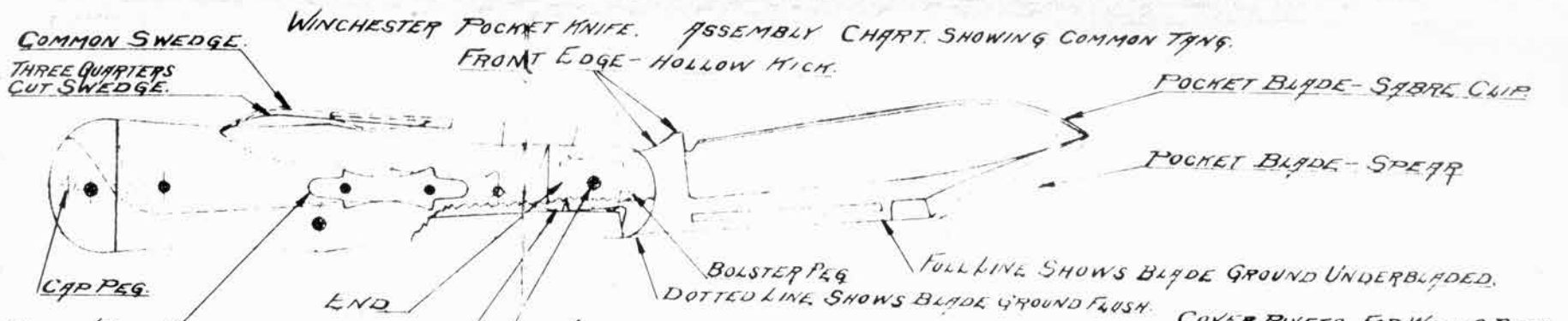
(2) B1 (C0) Inspect 100% - Visual Test.

3 B1 (7B) Fine Glaze & Color, Polish  
Frame, #120 Drused Wheel (S) 1. B.P.W.  
Color tang edges, Tang sides

Point of back.

4 B1 (7C) Wash in tetra chloride and dry  
in sawdust, Tank, & Tumbling barrel.

5 B1 (7D) Inspect 100% - Visual - Bench.



1/30/22 Galtfont